
KANIERE FORKS AND MCKAY'S CREEK HEPS RE-CONSENTING
TRUSTPOWER LIMITED

relation to the vegetation and habitats removed during the proposed KNF and MKY enhancements. Larger areas would be required if habitats were in very good condition and required very little rehabilitation, or if habitats were very degraded and their potential for successful rehabilitation was lower.

Other options that TPL could consider *as part* of an off-set mitigation package include:

1. Revegetating the existing cleared corridor associated with the penstock above Kanierie Forks Power Station if this is decommissioned (0.343 ha); and/or
2. Negotiating a land swap with DOC, involving the parcel of land owned by TPL on the northern side of the Kanierie River at McKays Weir (0.4046 ha). This land parcel is surrounded by high value public conservation land supporting intact rimu-miro/kamahi forest. It is has been modified to some degree, but supports some secondary kahikatea forest on an alluvial landform.

10 Conclusion

The enhanced Scheme is not anticipated to have any significant adverse effects on bird habitats or the bird communities of Lake Kaniere, or the Kaniere River.

With regard to the proposed MKY HEPS enhancement, where construction works are within the existing HEPS footprint, the effects on vegetation communities and the habitats of terrestrial birds and fauna are minor. The removal, disturbance and fragmentation of vegetation communities and faunal habitats along the proposed new section of water race will have adverse effects on terrestrial ecological values. Mitigation (including off-set mitigation) is recommended to avoid, minimise and remedy the adverse effects of the proposed MKY enhancement.

The proposed KNF HEPS enhancement will have short-term effects on terrestrial avifauna during construction as well as long-term effects relating to the loss of feeding, roosting and nesting habitat, habitat fragmentation and modification. As well as a number of potential short-term effects associated with construction works, the proposed enhancement will also result in the removal of 4.9 ha of ecologically valuable vegetation communities along the entire length of the construction envelope. This will have a number of significant adverse effects on terrestrial ecology values. A substantial mitigation package will be required to avoid, mitigate or remedy these effects. Off-set mitigation is recommended to mitigate the permanent loss of ecologically valuable vegetation communities and habitats within public conservation land.

Details of a potential 'mitigation package' for the proposed MKY and KNF enhancements have not been finalised. Without this detail, it is difficult to assess whether the balance of the potential effects against the proposed mitigation will result in a net positive or negative environmental outcome. If the recommended mitigation is implemented and appropriate construction and post construction management plans are developed and adhered to, it is possible that there could be an overall environmental gain, particularly if there is strong ecological input into the development of both the mitigation package and management plans.

References

- ATKINSON I.A.E. 1985. Derivation of vegetation mapping units for an ecological survey of Tongariro National Park, North Island, New Zealand. *New Zealand Journal of Botany* 23: 361-378.
- AWIMBO, J.A., NORTON, D.A. 1996. An evaluation of representativeness for nature conservation, Hokitika Ecological District, New Zealand. *Biological Conservation*, 75 (2): 177 – 186.
- BARLOW, M. 1983. Territories of South Island fernbirds (*Bowdleria punctata punctata*). *Notornis* 30: 199-218.
- BEGON, M., HARPER, J.L., TOWNSEND C.R. 1996. *Ecology – Individuals, Populations and Communities*. (Third Edition). Blackwell Science, Cambridge. 1068 p.
- BELL, D.J. 2009: *Distribution of NZ falcon (Falco novaeseelandiae) in New Zealand 2006-09*. Native Birds Taranaki, New Plymouth. 23 p.
- BEST, H. A. 1985. *Readers Digest, Complete Book of New Zealand Birds*. Readers Digest Services. New South Wales, Australia.
- BOFFA MISKELL LIMITED, 2005. *McKay's and Kaniere Hydro Electric Power Station: Potential Reconsenting Issues – Terrestrial Ecological Assessment*. Report prepared for Anderson Lloyd Caudwell on behalf of TrustPower Limited. 12 p + Appendix.
- BOFFA MISKELL LIMITED, 2009. *Kaniere Forks Hydroelectric Power Scheme Re-consenting: Lake Kaniere Bird Surveys, December 2007 and 2008*. Report prepared for Anderson Lloyd Caudwell on behalf of TrustPower Limited. 14 p.
- BROWN, K., INNES J., SHORTEN, R. 1993. Evidence that possums prey on and scavenge bird's eggs, birds and mammals. *Notornis*. 40(3): 169-177.
- CLARKSON, B.R., SORRELL, B.K., REEVES, P.N., CHAMPION, P.D., PARTRIDGE, T.R., CLARKSON, B.D. 2004. *Handbook for Monitoring Wetland Condition (Revised October 2004)*. Coordinated Monitoring of New Zealand Wetlands. A Ministry for the Environment Sustainable Management Fund Project.
- DAVIES-COLLEY, R. J., PAYNE, G. W., VAN ELSWIJK, M. 2000. Microclimate gradients across a forest edge. *New Zealand Journal of Ecology*. 24 (2): 111-121.
- DEPARTMENT OF CONSERVATION. *Kaniere Water Race Walkway – Biodiversity*. Unpublished information sheet. Hokitika Area Office.

KANIERE FORKS AND MCKAY'S CREEK HEPS RE-CONSENTING
TRUSTPOWER LIMITED

- HEATHER, B. D., ROBERTSON, H.A. 1996. *The Field Guide to the Birds of New Zealand*. Penguin Books Ltd, Auckland. 432 p.
- HITCHMOUGH, R.A., HOARE, J.M., JAMIESON, H; NEWMAN, D; TOCHER, M.D., ANDERSON, P.J., LETTINK M., WHITAKER, A.H. 2009. Conservation status of New Zealand reptiles, 2010. *New Zealand Journal of Zoology*, 37 (3): 203 – 224.
- HURST J.M. ALLEN, R.B. 2007. The RECCE Method for Describing New Zealand Vegetation - Expanded Manual. Version 4. Landcare Research Contract Report LC0708/029.
- JAMES, M., MARK, A., SINGLE, M. 2002. Lake Managers Handbook. Lake Level Management. Prepared for the Ministry for the Environment. Ministry for the Environment, Wellington. 86 p.
- JENSEN, L.A., SNOYINK, R.J. 2005. The distribution and numbers of Australasian crested grebe (kamana) in New Zealand, January 2004. *Notornis* 52: 34-42.
- JOHNSON, P.N. 1972. Applied ecological studies of shoreline vegetation at Lakes Manapouri and Te Anau, Fiordland. Part 2: The lake edge flora – habitats and relations to lake levels. *Proceedings of the New Zealand Ecological Society*. 19: 120-142.
- KUSHLAN, J.A. 1986. Responses of wading birds to seasonally fluctuating water levels: strategies and their limits. *Colonial Waterbirds* 9: 155-162.
- MARK, A.F. JOHNSON, P.N. WILSON, J.B. 1977. Factors involved in the recent mortality of plants from forest and scrub along the Lake Te Anau shoreline, Fiordland. *Proceedings of the New Zealand Ecological Society*. 24: 34-42.
- McEWEN, W. M. 1987. *Ecological Regions and Districts of New Zealand*. Third revised edition in four 1:500 000 maps. Report produced for Department of Conservation, Wellington.
- MISKELLY, C., DOWDING J.E., ELLIOT, G.P., HITCHMOUGH, R.A., POWESLAND, R.G., ROBERTSON, H.A., SAGAR, P.M., SCHOFIELD, P.R., TAYLOR, G.A. 2008. Conservation Status of New Zealand Birds, 2008. *Notornis* 55: 117-135.
- MURCIA 1995. Edge effects in fragmented forests: implications for conservation. *Trends in Ecology and Evolution* 10: 58-62.
- NORTON, D.A. 2002. Edge effects in a lowland temperate New Zealand rain forest. *DOC Science Internal Series 27*. Department of Conservation, Wellington. 33 p.
- NORTON, D.A., ROPER-LINDSAY, J. 2004. Assessing significance for biodiversity conservation on private land in New Zealand. *New Zealand Journal of Ecology* 28: 295-305.

KANIERE FORKS AND MCKAY'S CREEK HEPS RE-CONSENTING
TRUSTPOWER LIMITED

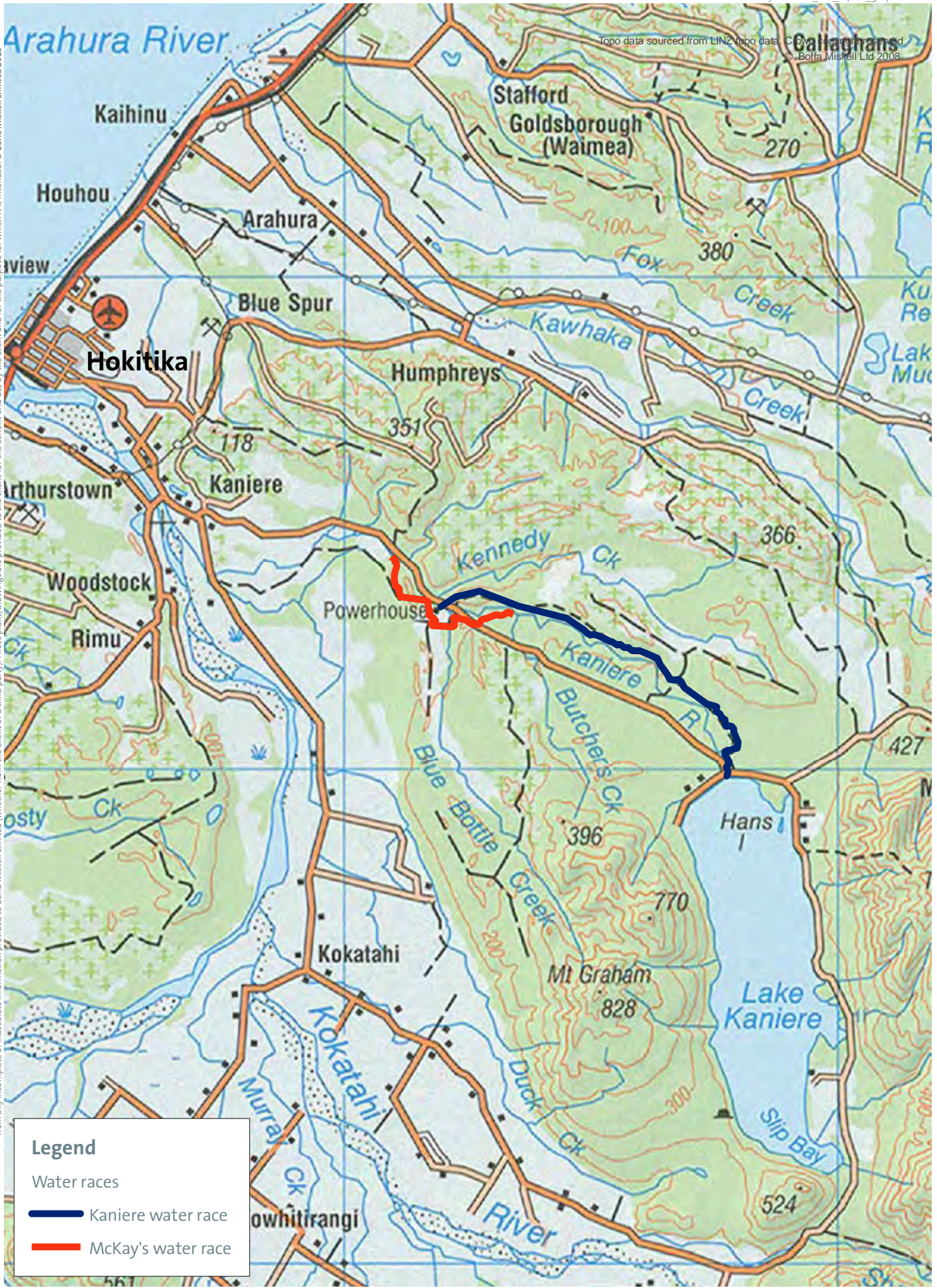
- O'DONNELL, C.F.J. 1996. Predators and the decline of New Zealand forest birds: an introduction to the hole-nesting bird and predator programme. *New Zealand Journal of Zoology*. 23: 213-219.
- O'DONNELL, C.F.J. 2001. Advances in New Zealand mammology 1990–2001: long-tailed bat. *Journal of the Royal Society of New Zealand* 31: 43–57.
- OSNZ NEWS. 1977. Supplement to *Notornis* 24(3).
- ROBERTSON, C.J.R., HYVONEN, P.; FRASER, M.J., PICKARD, C.R. 2007. *Atlas of bird distribution in New Zealand 1999–2004*. The Ornithological Society of New Zealand, Wellington. 533 p.
- RYDER CONSULTING 2010. *McKay's Creek/Kaniere Forks Hydroelectric Power Scheme Reconsenting: Aquatic Ecology Assessment of Effects*. Report Prepared for Chancery Green.
- SAGAR, P., KELLY, G. 2005. *Wahapo and MacKay's Creek Hydro Electric Power Schemes Resource Consents Ecological (Avifauna) Scoping Study*. NIWA Client Report CHC2005-140 prepared for Anderson Lloyd Caudwell on behalf of TrustPower Limited. 15 p.
- SANDERS, M. D. 1999. Effect of changes in water level on numbers of black stilts (*Himantopus novaezelandiae*) using deltas of Lake Benmore. *New Zealand Journal of Zoology*, 26, 155-163.
- SHAW, T. November 2007. Environment Court Evidence in the matter of resource consent applications (RC06019) by TrustPower Limited to the Grey District Council and the West Coast Regional Council for a proposed Arnold Valley Hydro Electric Scheme.
- SPURR, E.B., WARBURTON, B., DREW, K.W. 1992. Bird abundance in different-aged stands of rimu (*Dacrydium cupressinum*) - implications for coupe logging. *New Zealand Journal of Ecology*. 16(2): 109-118
- TRUSTPOWER LIMITED 2010a. Kaniere Forks and McKay's Creek Power Schemes Re-consenting: Hydrological Study. Report prepared for TrustPower Limited.
- TRUSTPOWER LIMITED 2010b. McKay's Creek Hydro-electric Power Scheme Enhancement: Feasibility and Scoping Report Prepared for Scheme Re-consenting.
- TRUSTPOWER LIMITED 2010c. Kaniere Hydro-electric Power Scheme - Wards Road Enhancement: Feasibility and Scoping Report for Scheme Re-consenting.

KANIERE FORKS AND MCKAY'S CREEK HEPS RE-CONSENTING
TRUSTPOWER LIMITED

- WALKER, S., Cieraad, E., Grove, P., Lloyd, K., Myers, S., Park, T., Porteous, T. 2007. Guide for Users of the Threatened Environment Classification. Version 1.1. Landcare Research. 35 p.
- WEST COAST REGIONAL COUNCIL. 2000. West Coast Regional Policy Statement.
- WEST COAST REGIONAL COUNCIL. 2005. *Regional Pest Plant Management Strategy for the West Coast*. 34 p.
- WEST COAST REGIONAL COUNCIL. 2007. *West Coast Regional Council – Proposed Water Management Plan*. June 2007. 135 p.
- WESTLAND DISTRICT COUNCIL 2002. Westland District Plan.
- WHALEY, K.J., CLARKSON, B.D. LEATHWICK, J.R. 1995. *Assessment of criteria used to determine 'significance' of natural areas in relation to section 6(c) of the Resource Management Act (1991)*. Landcare Research Contract Report: LC9596/021.
- WHITAKER T., LYALL, J. 2004. *Conservation of Lizards in West Coast/Tai Poutini Conservancy*. Department of Conservation, Wellington. 93 p.
- WILLIAMS, M. 2004. Bird communities of lakes and wetlands. Pp. 26.1 – 26.11 In: Harding, J.S.; Mosley, M.P.; Pearson, C.P.; and Sorrel, B.K. (editors) *Freshwaters of New Zealand*. New Zealand Hydrological Society Inc. and New Zealand Limnological Society Inc. Christchurch, New Zealand. 764 p.
- YOUNG, A. AND MITCHELL, N. 1994. Microclimate and vegetation edge effects in a fragmented podocarp-broadleaf forest in New Zealand. *Biological Conservation* 67: 63-72

Appendix 1: Maps

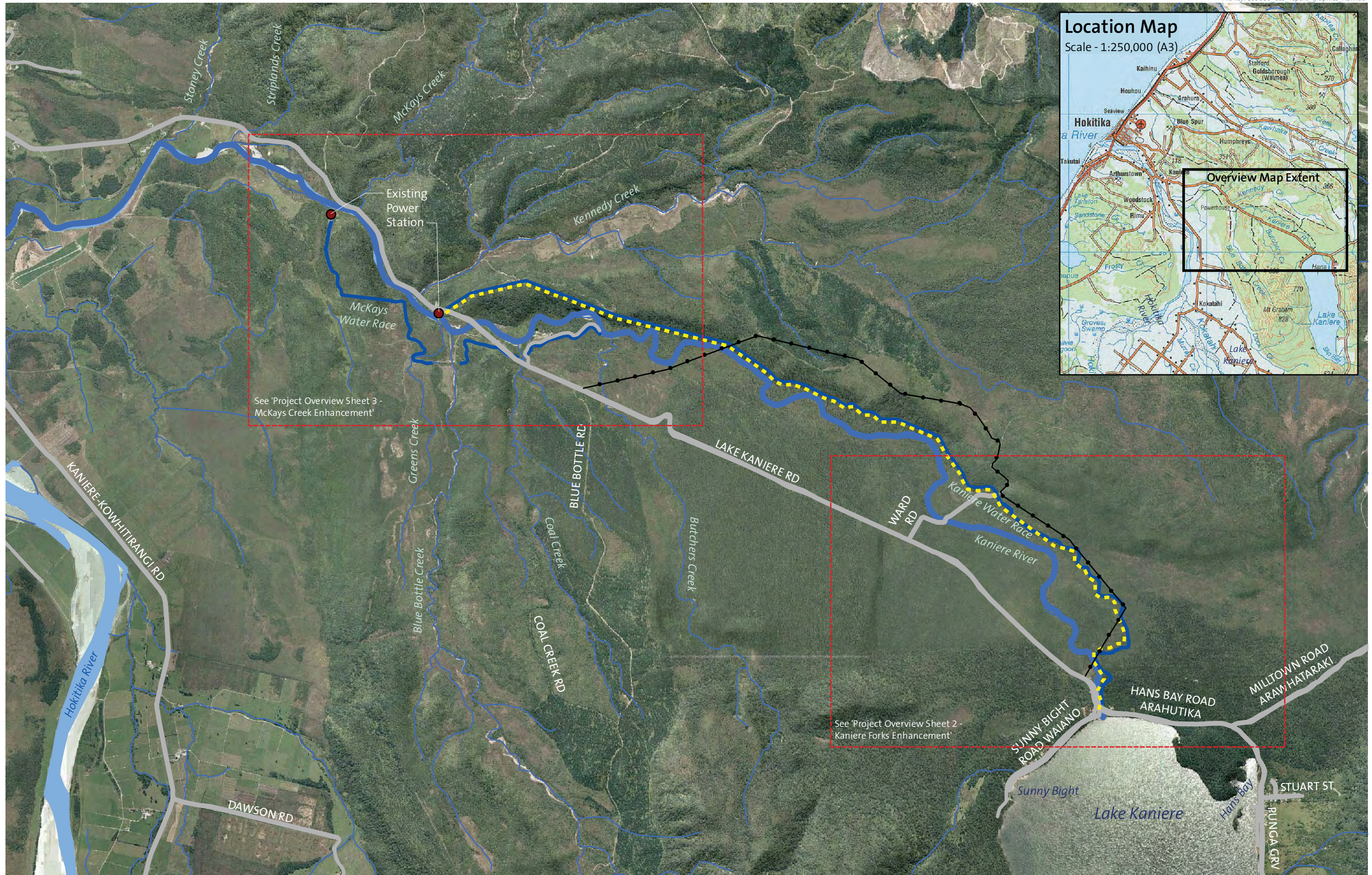
These plans and drawings have been produced as a result of information provided by the client and/or sourced by or provided to Boffa Miskell Limited by a third party for the purposes of providing the services. No responsibility is taken by Boffa Miskell Limited for any liability or action arising from any incomplete or inaccurate information provided to Boffa Miskell Limited (whether from the client or a third party). These plans/drawings are provided to the client for the benefit and use by the client and for the purpose for which it is intended. © Boffa Miskell Limited 2010

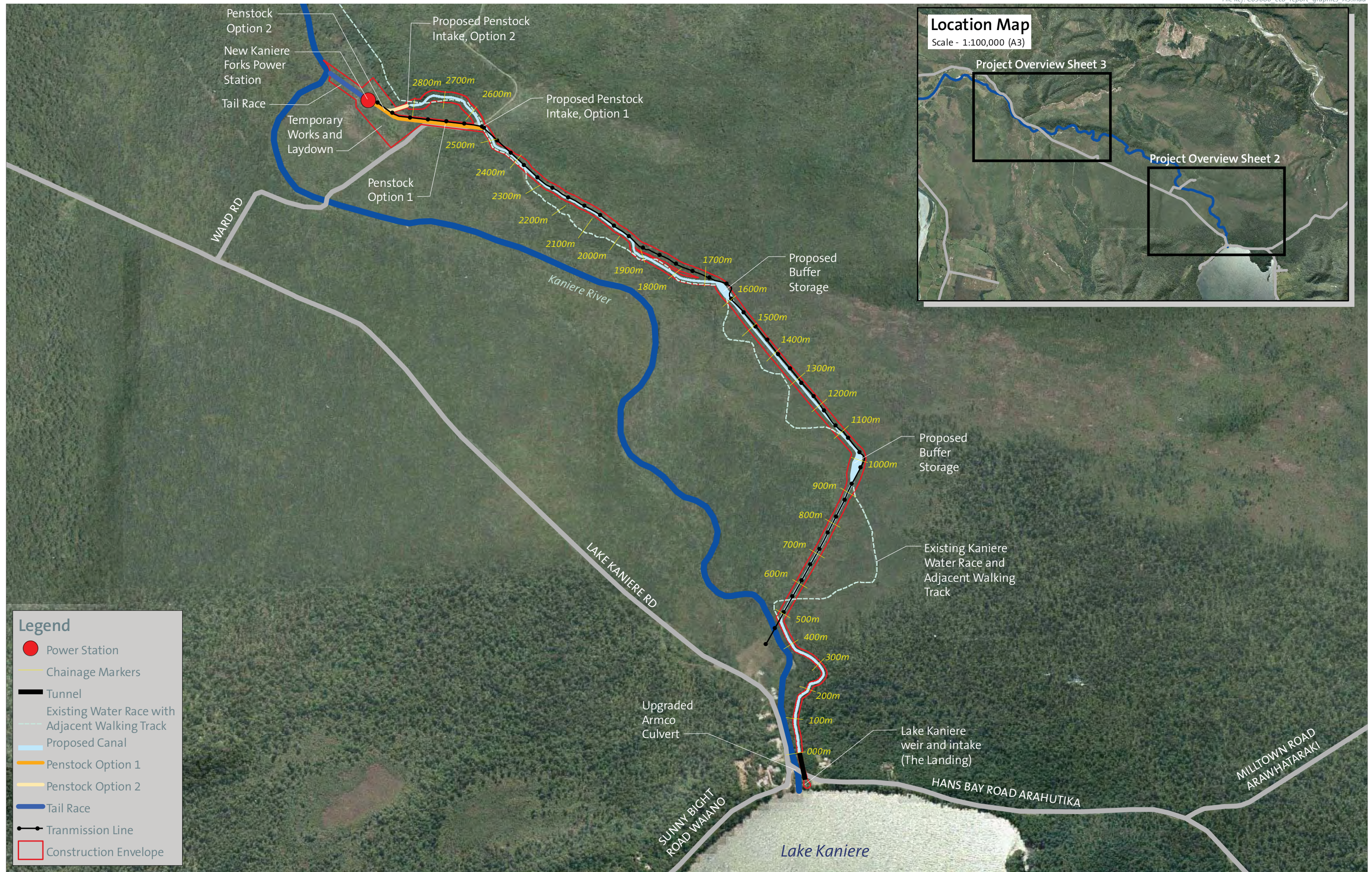


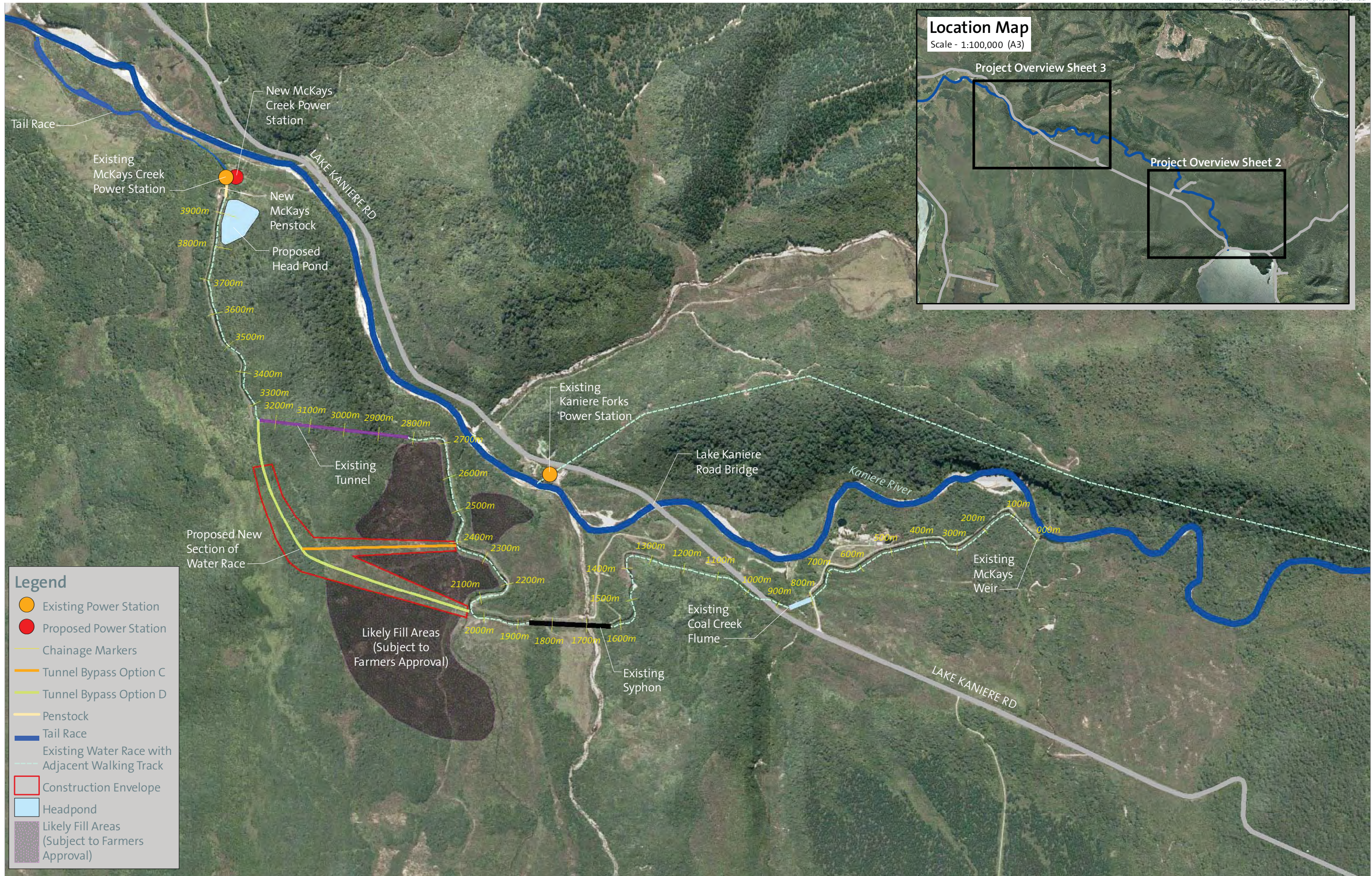
Legend

Water races

- Kaniere water race
- McKay's water race



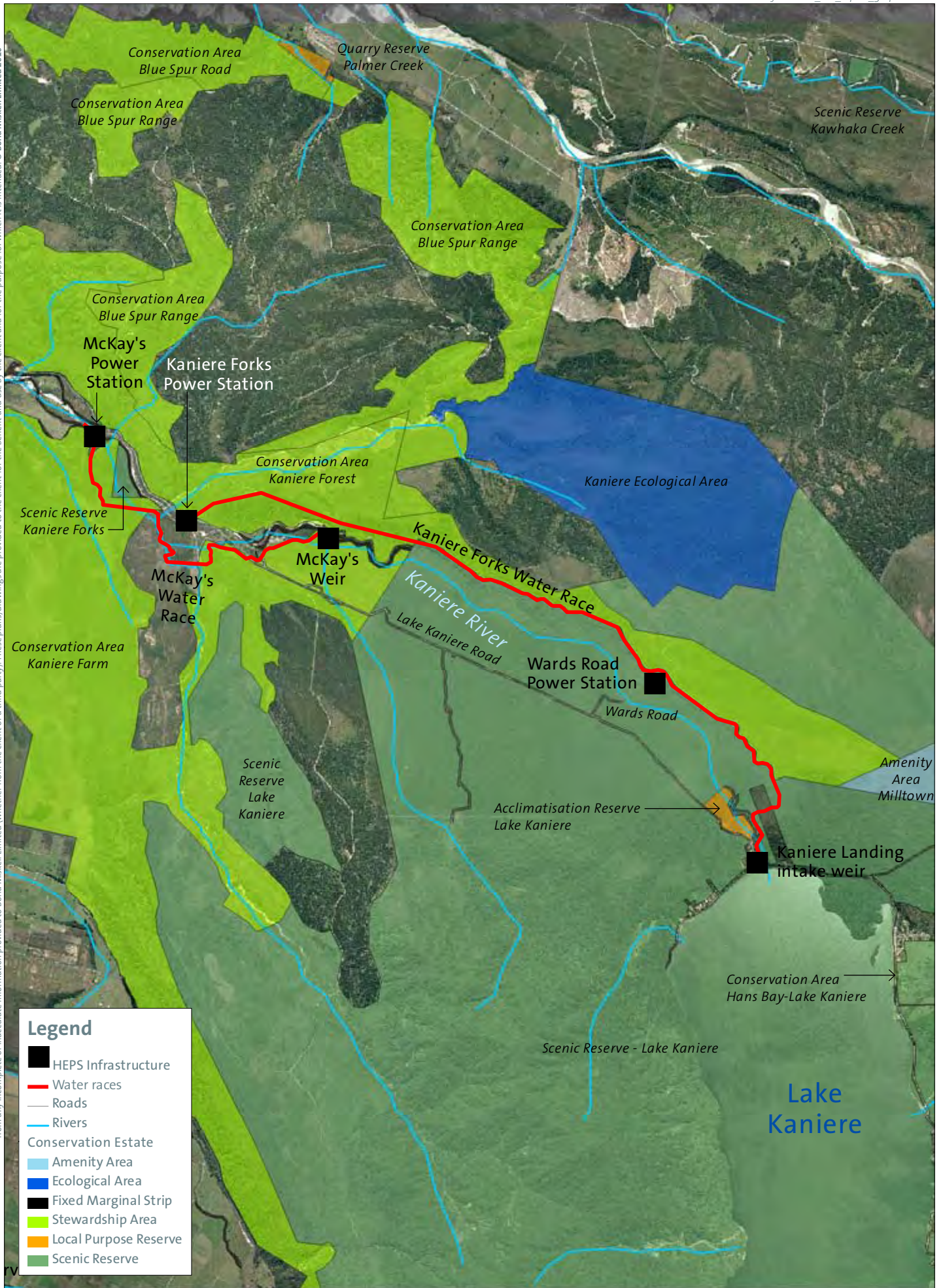




Legend

- Existing Power Station
- Proposed Power Station
- Chainage Markers
- Tunnel Bypass Option C
- Tunnel Bypass Option D
- Penstock
- Tail Race
- Existing Water Race with Adjacent Walking Track
- ▭ Construction Envelope
- ▭ Headpond
- ▭ Likely Fill Areas (Subject to Farmers Approval)

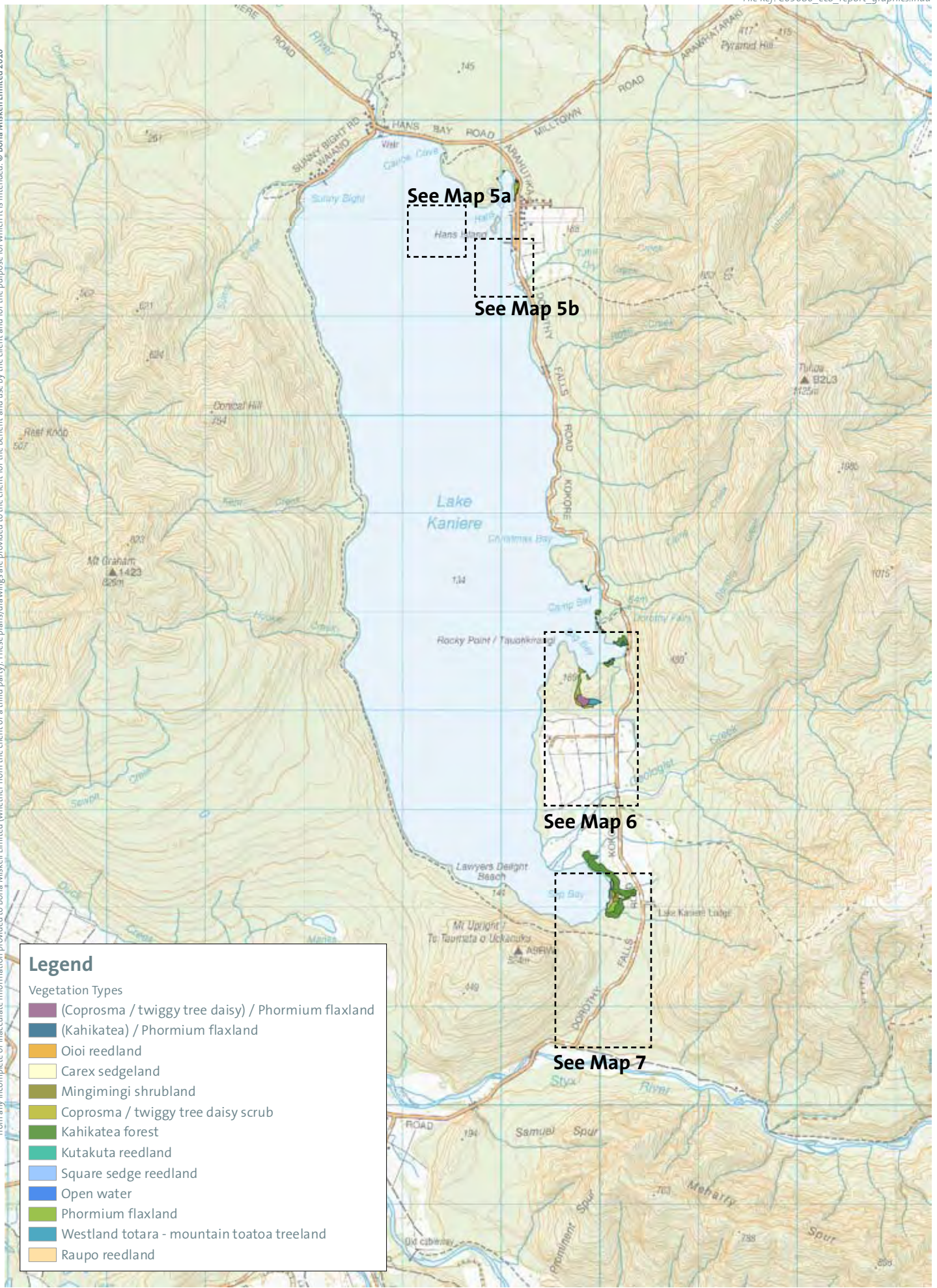
These plans and drawings have been produced as a result of information provided by the client and/or sourced by Boffa Miskell Limited by a third party for the purposes of providing the services. No responsibility is taken by Boffa Miskell Limited for any liability or action arising from any incomplete or inaccurate information provided to Boffa Miskell Limited (whether from the client or a third party). These plans/drawings are provided to the client for the benefit and use by the client and for the purpose for which it is intended. © Boffa Miskell Limited 2010



Legend

- HEPS Infrastructure
- Water races
- Roads
- Rivers
- Conservation Estate
- Amenity Area
- Ecological Area
- Fixed Marginal Strip
- Stewardship Area
- Local Purpose Reserve
- Scenic Reserve

These plans and drawings have been produced as a result of information provided by the client and/or sourced by or provided to Boffa Miskell Limited by a third party for the purposes of providing the services. No responsibility is taken by Boffa Miskell Limited for any liability or action arising from any incomplete or inaccurate information provided to Boffa Miskell Limited (whether from the client or a third party). These plans/drawings are provided to the client for the benefit and use by the client and for the purpose for which it is intended. © Boffa Miskell Limited 2010



Legend

Vegetation Types

- (Coprosma / twiggly tree daisy) / Phormium flaxland
- (Kahikatea) / Phormium flaxland
- Oioi reedland
- Carex sedgeland
- Mingimingi shrubland
- Coprosma / twiggly tree daisy scrub
- Kahikatea forest
- Kutakuta reedland
- Square sedge reedland
- Open water
- Phormium flaxland
- Westland totara - mountain toatoa treeland
- Raupo reedland

Legend

Vegetation Types

 (Kahikatea) / Phormium flaxland







Map 5a



Legend

Vegetation Types

-  Carex sedgeland
-  Kahikatea forest
-  Open water
-  Phormium flaxland

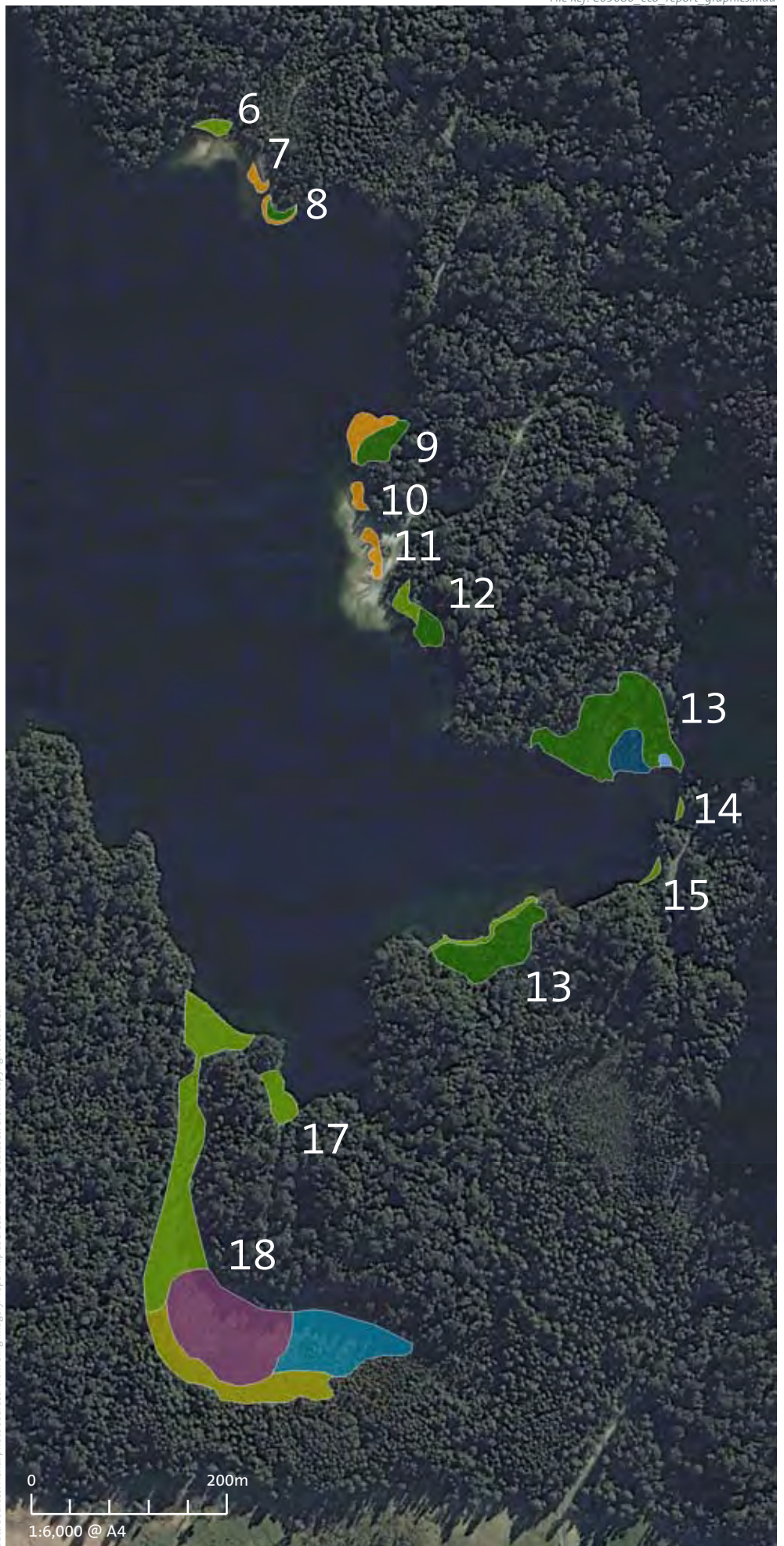


Map 5b



These plans and drawings have been produced as a result of information provided by the client and/or sourced by or provided to Boffa Miskell Limited by a third party for the purposes of providing the services. No responsibility is taken by Boffa Miskell Limited for any liability or action arising from any incomplete or inaccurate information provided to Boffa Miskell Limited (whether from the client or a third party). These plans/drawings are provided to the client for the benefit and use by the client and for the purpose for which it is intended. © Boffa Miskell Limited 2010
 Data Sources: Aerial photo sourced from Bing Imagery, Topo map sourced from LINZ dataset, Crown copyright reserved.





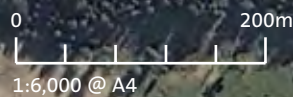
Legend

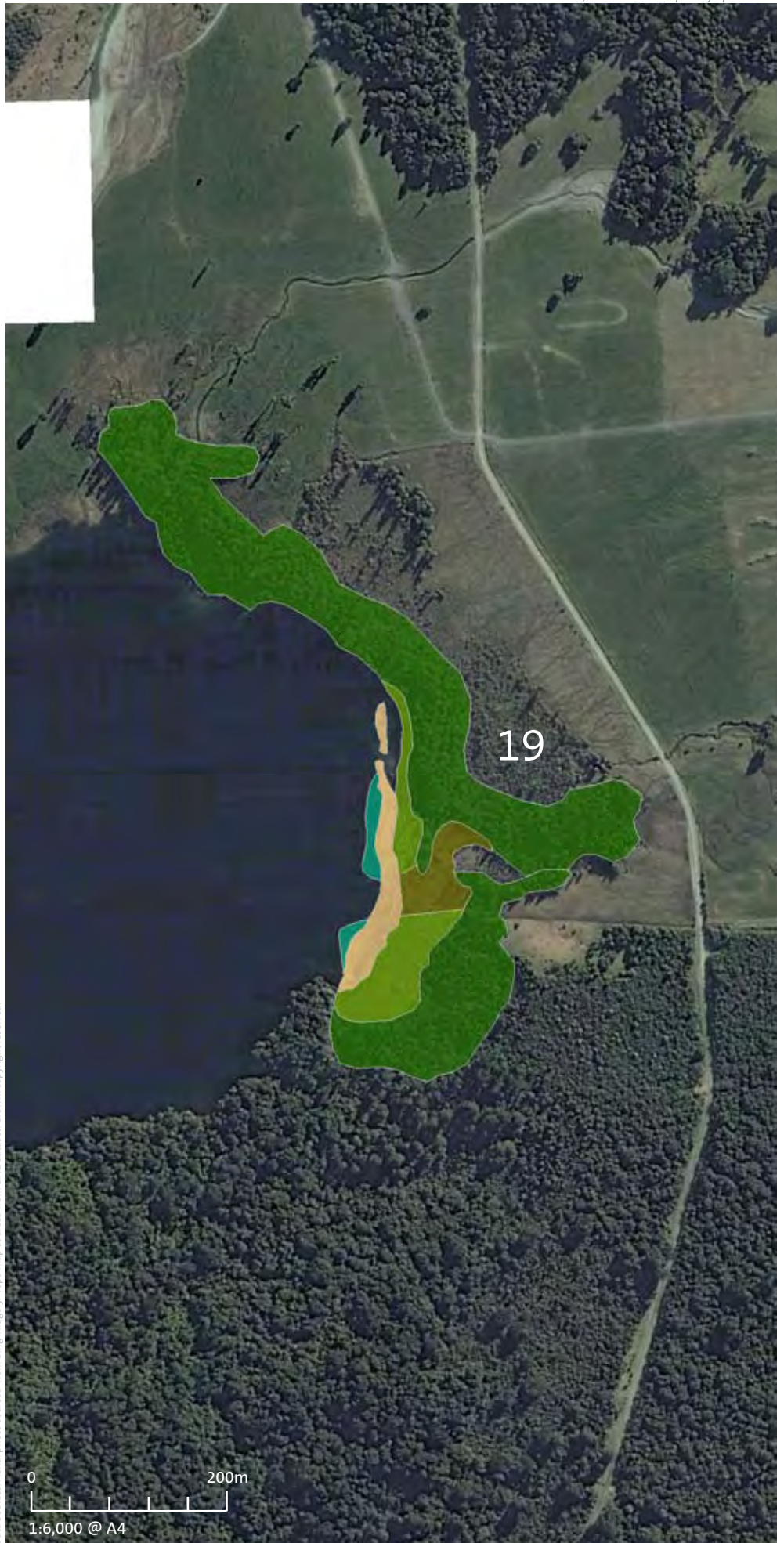
Vegetation Types

- (Coprosma / twiggy tree daisy) / Phormium flaxland
- (Kahikatea) / Phormium flaxland
- Oioi reedland
- Coprosma / twiggy tree daisy scrub
- Kahikatea forest
- Square sedge reedland
- Phormium flaxland
- Westland totara - Mountain toatoa treeland



These plans and drawings have been produced as a result of information provided by the client and/or sourced by or provided to Boffa Miskell Limited by a third party for the purposes of providing the services. No responsibility is taken by Boffa Miskell Limited for any liability or action arising from any incomplete or inaccurate information provided to Boffa Miskell Limited (whether from the client or a third party). These plans/drawings are provided to the client for the benefit and use by the client and for the purpose for which it is intended. © Boffa Miskell Limited 2010
 Data Sources: Aerial photo sourced from Bing Imagery. Topo map sourced from LINZ dataset. Crown copyright reserved.





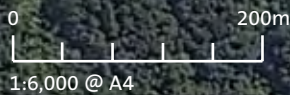
Legend

Vegetation Types

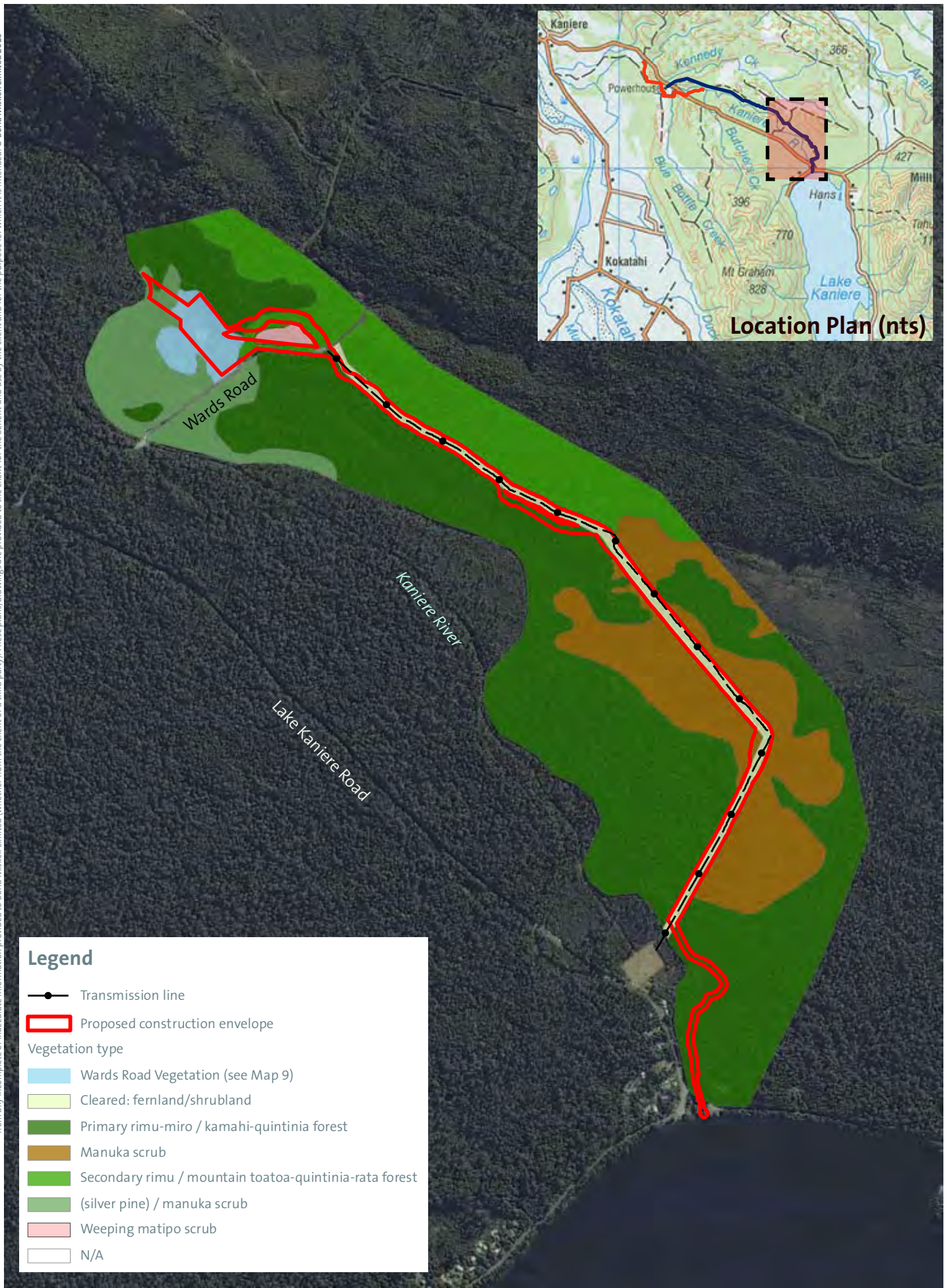
- Coprosma shrubland
- Kahikatea forest
- Kutakuta reedland
- Phormium flaxland
- Raupo reedland



These plans and drawings have been produced as a result of information provided by the client and/or sourced by the client and/or provided to Boffa Miskell Limited by a third party for the purposes of providing the services. No responsibility is taken by Boffa Miskell Limited for any liability or action arising from any incomplete or inaccurate information provided to Boffa Miskell Limited (whether from the client or a third party). These plans/drawings are provided to the client for the benefit and use by the client and for the purpose for which it is intended. © Boffa Miskell Limited 2010
 Data Sources: Aerial photo sourced from Bing Imagery. Topo map sourced from LINZ dataset. Crown copyright reserved.



These plans and drawings have been produced as a result of information provided by the client and/or sourced by or provided to Boffa Miskell Limited by a third party for the purposes of providing the services. No responsibility is taken by Boffa Miskell Limited for any liability or action arising from any incomplete or inaccurate information provided to Boffa Miskell Limited (whether from the client or a third party). These plans/drawings are provided to the client for the benefit and use by the client and for the purpose for which it is intended. © Boffa Miskell Limited 2010



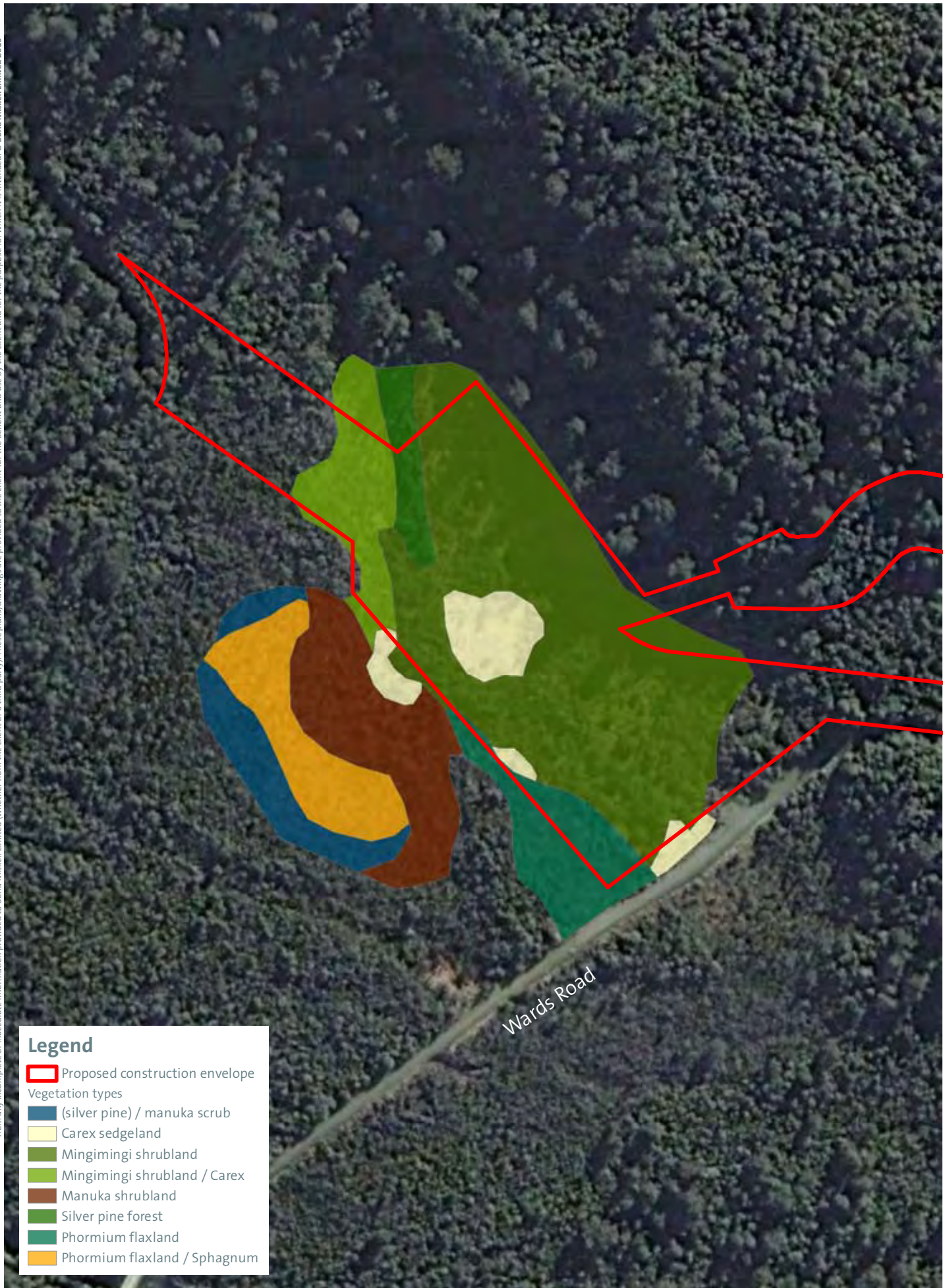
Legend

- Transmission line
- Proposed construction envelope

Vegetation type

- Wards Road Vegetation (see Map 9)
- Cleared: fernland/shrubland
- Primary rimu-miro / kamahi-quintinia forest
- Manuka scrub
- Secondary rimu / mountain toatoa-quintinia-rata forest
- (silver pine) / manuka scrub
- Weeping matipo scrub
- N/A

These plans and drawings have been produced as a result of information provided by the client and/or sourced by or provided to Boffa Miskell Limited by a third party for the purposes of providing the services. No responsibility is taken by Boffa Miskell Limited for any liability or action arising from any incomplete or inaccurate information provided to Boffa Miskell Limited (whether from the client or a third party). These plans/drawings are provided to the client for the benefit and use by the client and for the purpose for which it is intended. © Boffa Miskell Limited 2010

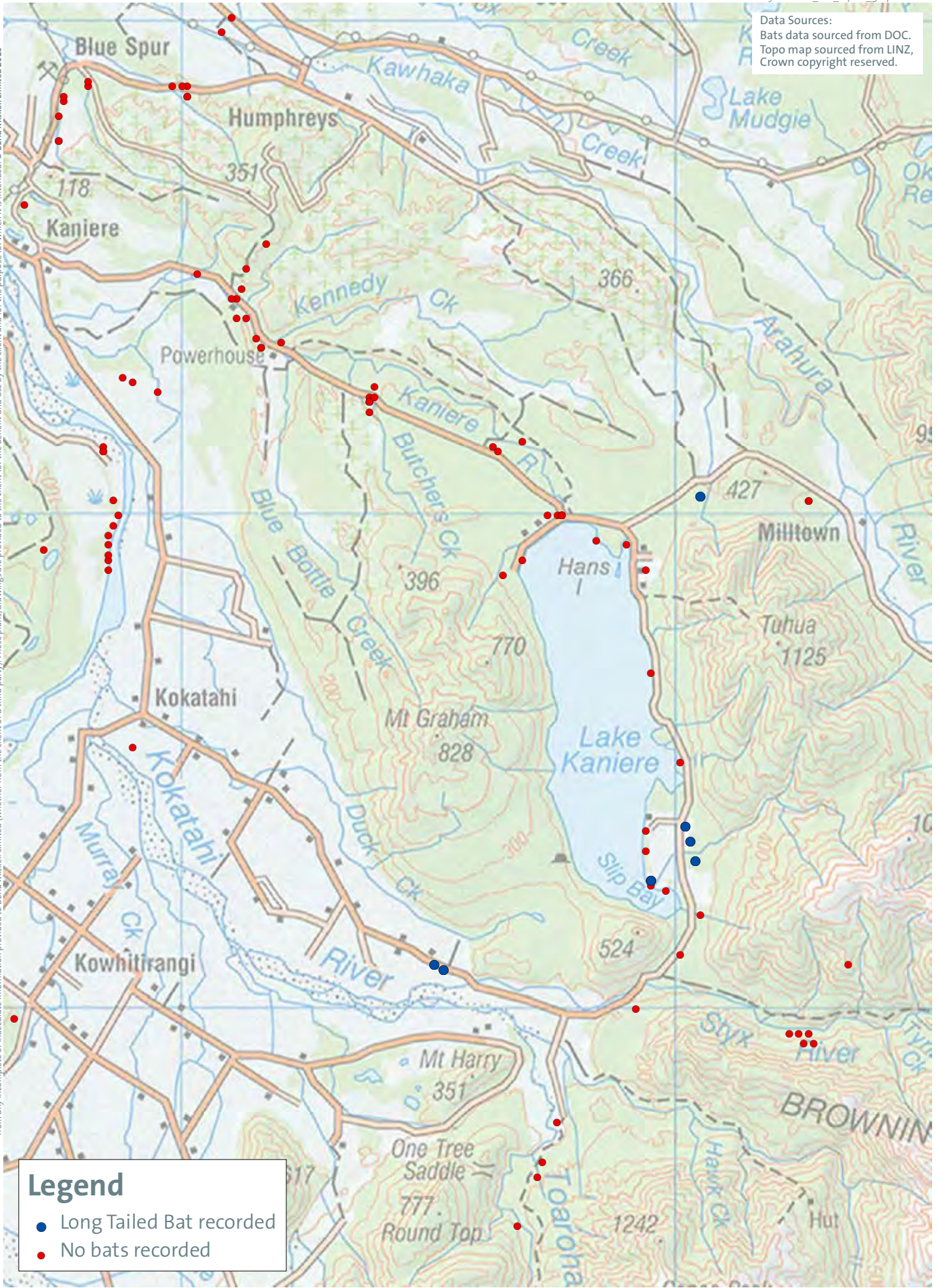


Legend

- Proposed construction envelope
- Vegetation types
- (silver pine) / manuka scrub
- Carex sedgeland
- Mingimingi shrubland
- Mingimingi shrubland / Carex
- Manuka shrubland
- Silver pine forest
- Phormium flaxland
- Phormium flaxland / Sphagnum

Data Sources:
Bats data sourced from DOC.
Topo map sourced from LINZ,
Crown copyright reserved.

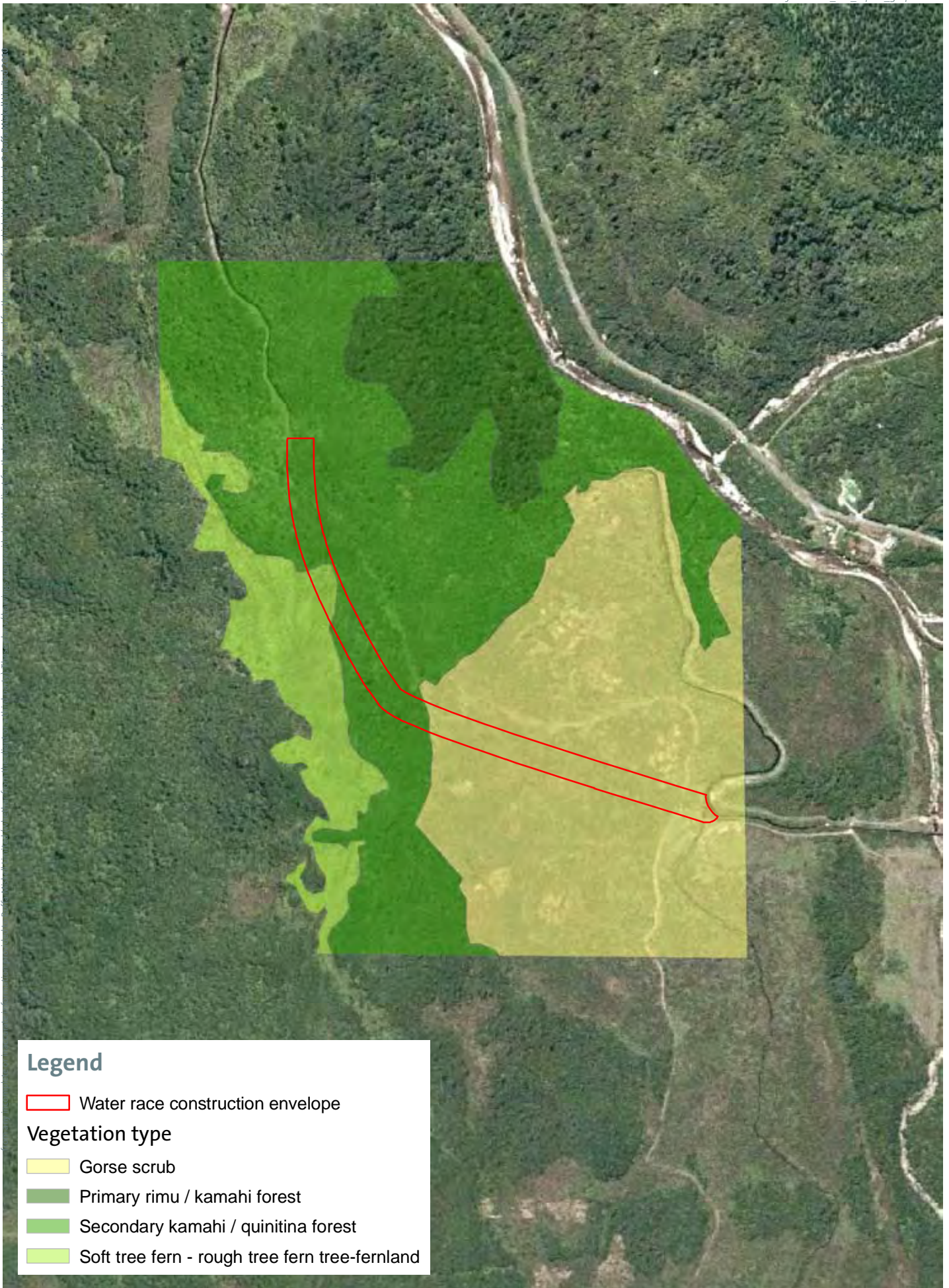
These plans and drawings have been produced as a result of information provided by the client and/or sourced by or provided to Boffa Miskell Limited by a third party for the purposes of providing the services. No responsibility is taken by Boffa Miskell Limited for any liability or action arising from any incomplete or inaccurate information provided to Boffa Miskell Limited (whether from the client or a third party). These plans/drawings are provided to the client for the benefit and use by the client and for the purpose for which it is intended. © Boffa Miskell Limited 2010



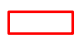
Legend

- Long Tailed Bat recorded
- No bats recorded

These plans and drawings have been produced as a result of information provided by the client and/or sourced by or provided to Boffa Miskell Limited by a third party for the purposes of providing the services. No responsibility is taken by Boffa Miskell Limited for any liability or action arising




Legend


 Water race construction envelope

Vegetation type

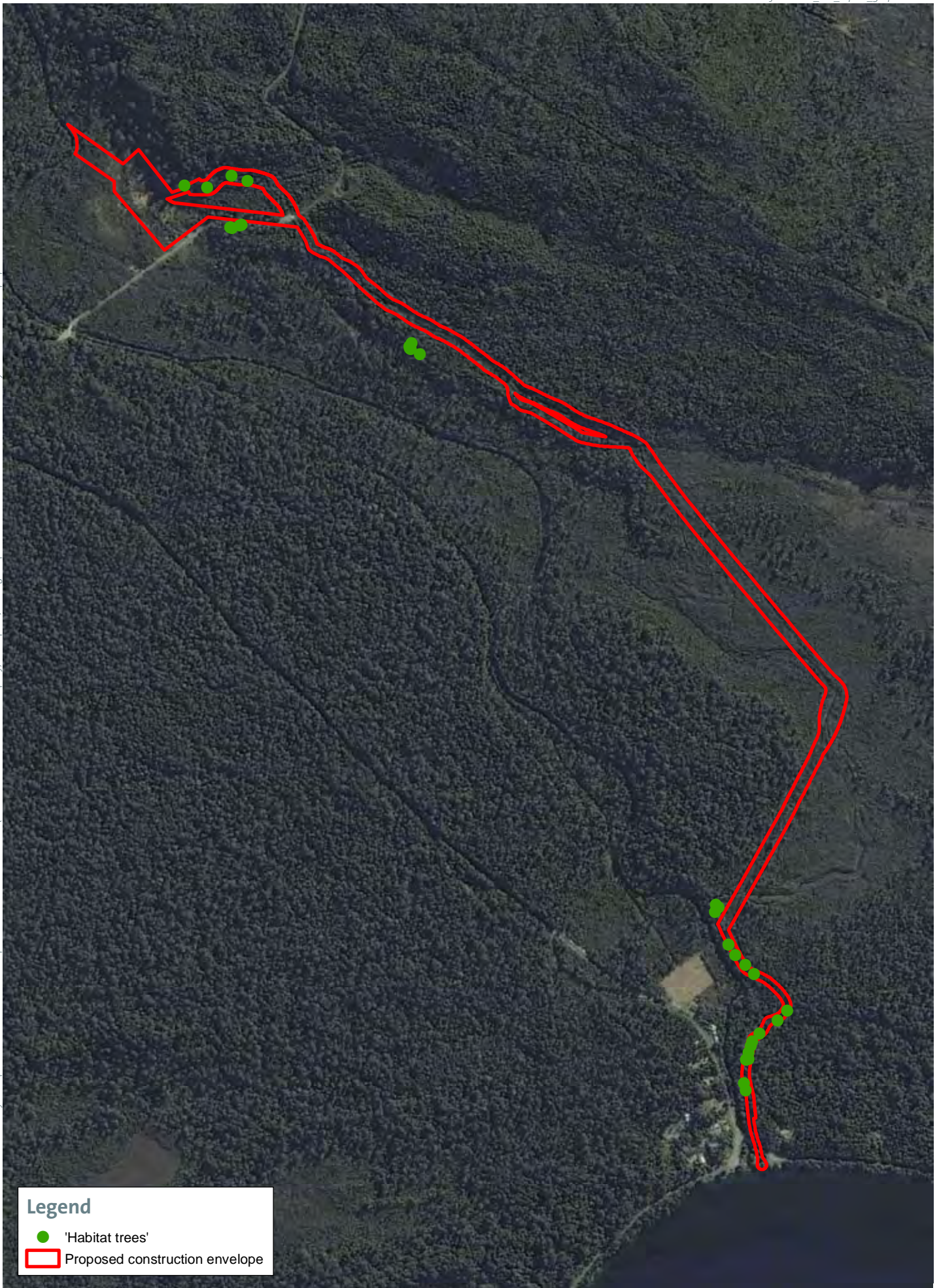
 Gorse scrub

 Primary rimu / kamahi forest

 Secondary kamahi / qunitina forest

 Soft tree fern - rough tree fern tree-fernland

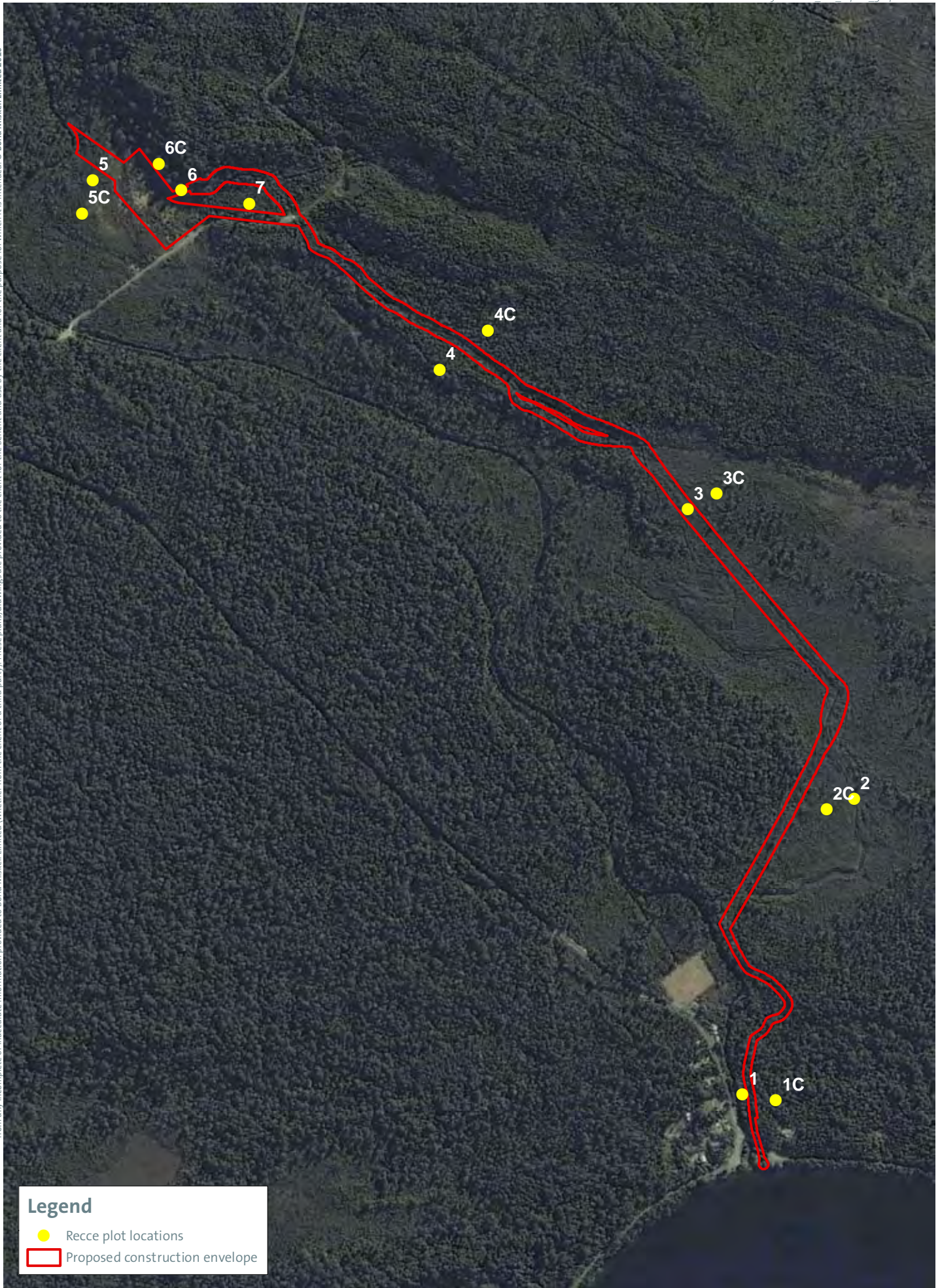
These plans and drawings have been produced as a result of information provided by the client and/or sourced by or provided to Boffa Miskell Limited by a third party for the purposes of providing the services. No responsibility is taken by Boffa Miskell Limited for any liability or action arising from any incomplete or inaccurate information provided to Boffa Miskell Limited (whether from the client or a third party). These plans/drawings are provided to the client for the benefit and use by the client and for the purpose for which it is intended. © Boffa Miskell Limited 2010



Legend

- 'Habitat trees'
- Proposed construction envelope

These plans and drawings have been produced as a result of information provided by the client and/or sourced by or provided to Boffa Miskell Limited by a third party for the purposes of providing the services. No responsibility is taken by Boffa Miskell Limited for any liability or action arising from any incomplete or inaccurate information provided to Boffa Miskell Limited (whether from the client or a third party). These plans/drawings are provided to the client for the benefit and use by the client and for the purpose for which it is intended. © Boffa Miskell Limited 2010



Legend

- Recce plot locations
- Proposed construction envelope

Appendix 2: Scientific names of plant species recorded during site investigations or mentioned in the text

* Denotes an exotic species

Common name	Scientific name
	<i>Acaena novae-zelandiae</i>
Red bidibid	
	<i>Agrostis capillaris</i> *
Browntop	
	<i>Agrostis stolonifera</i> *
Creeping bent	
	<i>Anthoxanthum odoratum</i>
Sweet vernal	
	<i>Apodasmia similis</i>
Jointed wire rush	
	<i>Aristotelia serrata</i>
Wineberry	
	<i>Ascarina lucida</i> var. <i>lucida</i>
Hutu	
	<i>Asplenium appendiculatum</i>
Spleenwort	
	<i>Asplenium bulbiferum</i>
Hen and chicken fern	
	<i>Asplenium flaccidum</i>
Drooping spleenwort	
	<i>Astelia grandis</i>
Swamp astelia	
	<i>Baumea tenax</i>
	<i>Blechnum discolor</i>
Crown fern	
	<i>Blechnum fluviatile</i>
Kiwikiwi	
	<i>Blechnum minus</i>
Swamp kiokio	
	<i>Blechnum novaezealandiae</i>
Kiokio	
	<i>Blechnum penna-marina</i>
Little hard fern	
	<i>Blechnum procerum</i>
Small kiokio	
	<i>Carex coriacea</i>
Cutty grass	
	<i>Carex maorica</i>
	<i>Carex secta</i>
Purei	
	<i>Carex sinclairii</i>
	<i>Carex</i> sp.
	<i>Carex virgata</i>
Swamp sedge	
	<i>Carmichaelia</i> sp.
Native broom	
	<i>Carpodetus serratus</i>
Putaputaweta	
	<i>Cirsium</i> sp.*
Thistle	
	<i>Clematis forsteri</i>
Small white clematis	
	<i>Clematis vitalba</i>
Old man's beard	
	<i>Coprosma areolata</i>
Thin-leaved coprosma	

KANIERE FORKS AND MCKAY'S CREEK HEPS RE-CONSENTING
TRUSTPOWER LIMITED

Common name	Scientific name
<i>Coprosma foetidissima</i>	Stinkwood
<i>Coprosma grandifolia</i>	Large-leaved coprosma/Kanono
<i>Coprosma lucida</i>	Karamu
<i>Coprosma propinqua</i>	Mingimingi
<i>Coprosma sp.</i>	
<i>Coprosma tayloriae</i>	
<i>Coprosma tenuicaulis</i>	Swamp coprosma
<i>Cordyline australis</i>	Cabbage tree
<i>Coriaria arborea</i>	Tutu
<i>Cortaderia richardii</i>	Toetoe
<i>Cotoneaster sp*</i>	Cotoneaster
<i>Crocasmia x crocosmiiflora*</i>	Montbretia
<i>Ctenopteris heterophylla</i>	Comb fern
<i>Cyathea smithii</i>	Soft tree fern/ponga
<i>Dacrycarpus dacrydioides</i>	Kahikatea
<i>Dacrydium cupressinum</i>	Rimu
<i>Dawsonia superba</i>	Giant moss
<i>Dianella nigra</i>	Ink berry/Turutu
<i>Dicksonia squarrosa</i>	Rough tree fern/Wheki
<i>Digitalis purpurea*</i>	Foxglove
<i>Dracophyllum longifolium</i>	Inanga
<i>Earina aestivalis</i>	Bamboo orchid
<i>Earina autumnalis</i>	Easter orchid
<i>Elaeocarpus dentatus</i>	Hinau
<i>Elaeocarpus hookerianus</i>	Pokaka
<i>Eleocharis acuta</i>	Sharp spike sedge
<i>Eleocharis sphacelata</i>	Tall spike sedge/Kutakuta
<i>Epilobium pallidiflorum</i>	Tarawera
<i>Freycinetia banksii</i>	Kiekie
<i>Fuchsia excorticata</i>	Kotukutuku
<i>Gahnia rigida</i>	
<i>Galium trilobum</i>	Native bedstraw
<i>Gaultheria antipoda</i>	Bush snowberry
<i>Gaultheria rupestris</i>	
<i>Gleichenia dicarpa</i>	Tangle fern
<i>Grammitis billardierei</i>	Common strap fern
<i>Griselinia littoralis</i>	Broadleaf
<i>Gunnera monoica</i>	

KANIERE FORKS AND MCKAY'S CREEK HEPS RE-CONSENTING
TRUSTPOWER LIMITED

Common name	Scientific name
	<i>Gunnera prorepens</i>
	<i>Hebe salicifolia</i> Koromiko
	<i>Hedycarya arborea</i> Porokaiwhiri
	<i>Helichrysum filicaule</i> Creeping or slender everlasting daisy
	<i>Hoheria glabrata</i> Mountain lacebark
	<i>Holcus lanatus*</i> Yorkshire fog
	<i>Huperzia varia</i>
	<i>Hydrocotyle heteromeria</i> Waxweed
	<i>Hydrocotyle novae-zeelandiae</i>
	<i>Hymenophyllum bivalve</i> Filmy fern
	<i>Hymenophyllum demissum</i> Drooping filmy fern
	<i>Hypolepis ambigua</i>
	<i>Hypolepis millefolium</i> Thousand leaved fern
	<i>Ileostylus micranthus</i> Green mistletoe
	<i>Juncus acuminatus*</i> Sharp-fruited rush
	<i>Juncus bulbosus*</i> Bulbous rush
	<i>Juncus edgariae</i> Wiwi
	<i>Juncus effusus*</i> Leafless rush
	<i>Lepidosperma australe</i> Square sedge
	<i>Leptecophylla juniperina</i> Prickly mingimingi
	<i>Leptinella sp.</i>
	<i>Leptopteris superba</i> Prince of Wales feathers
	<i>Leptospermum scoparium</i> Manuka
	<i>Leycesteria formosa*</i> Himalayan honeysuckle
	<i>Libertia pulcella</i>
	<i>Libocedrus bidwillii</i> Kaikawaka
	<i>Lolium perenne*</i> Perennial rye grass
	<i>Lotus pedunculatus*</i> Lotus
	<i>Lycopodium fastigiatum</i> Alpine clubmoss
	<i>Lycopodium scariosum</i> Creeping clubmoss
	<i>Manoao colensoi</i> Silver pine
	<i>Melicope simplex</i> Poataniwha
	<i>Melicytus ramiflorus</i> Mahoe
	<i>Metrosideros diffusa</i> White rata
	<i>Metrosideros fulgens</i> Rata
	<i>Metrosideros perforata</i> White rata
	<i>Metrosideros umbellata</i> Southern rata
	<i>Microlaena avenacea</i> Bush rice grass