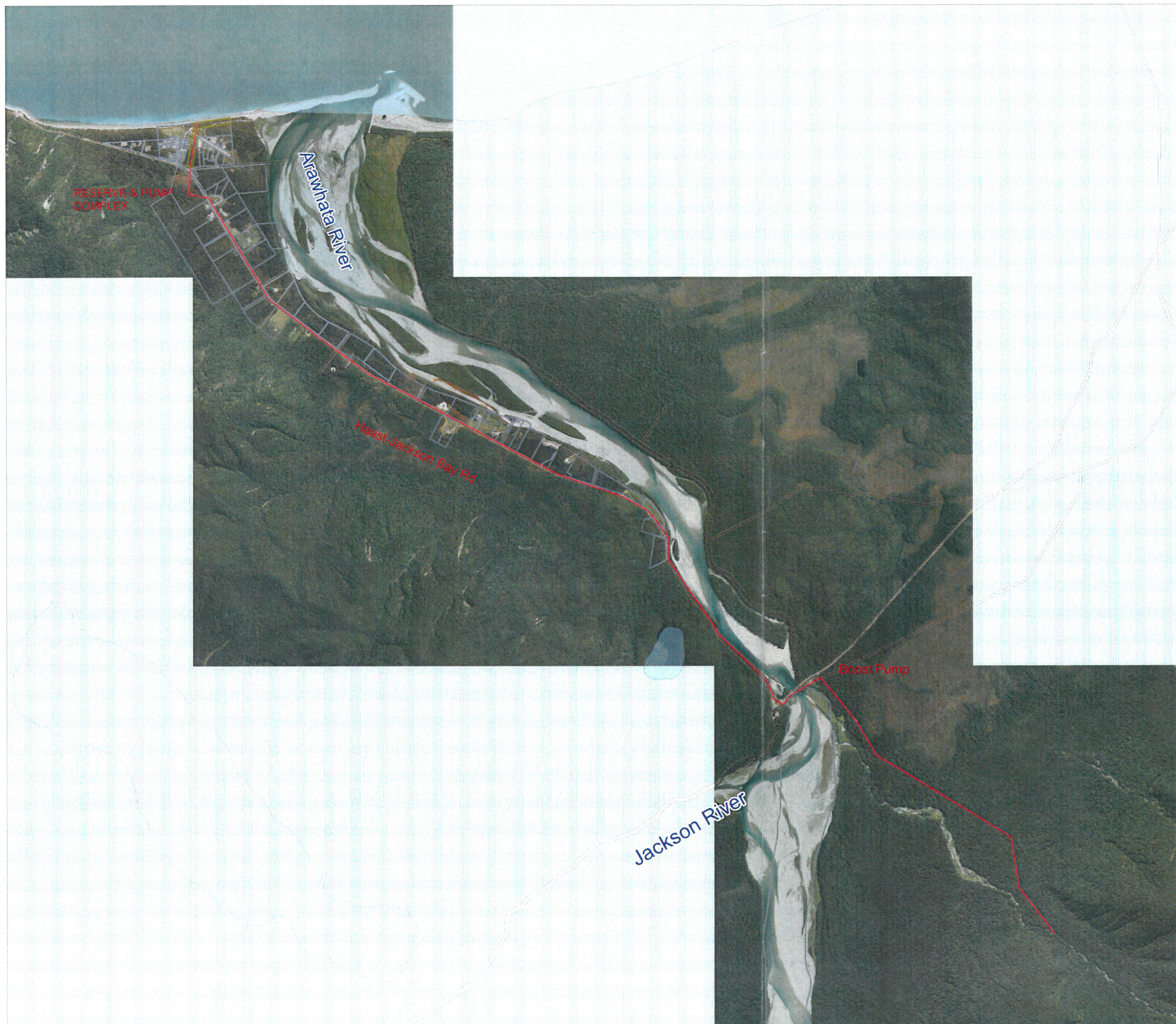


Appendix Two – Applicant’s Locality and Proposed Site Plans



LEGEND

— Pipeline

Cadastral

□ Property Titles

▤ DOC Public Conservation Area

□ Road Parcels

■ Hydro Parcels

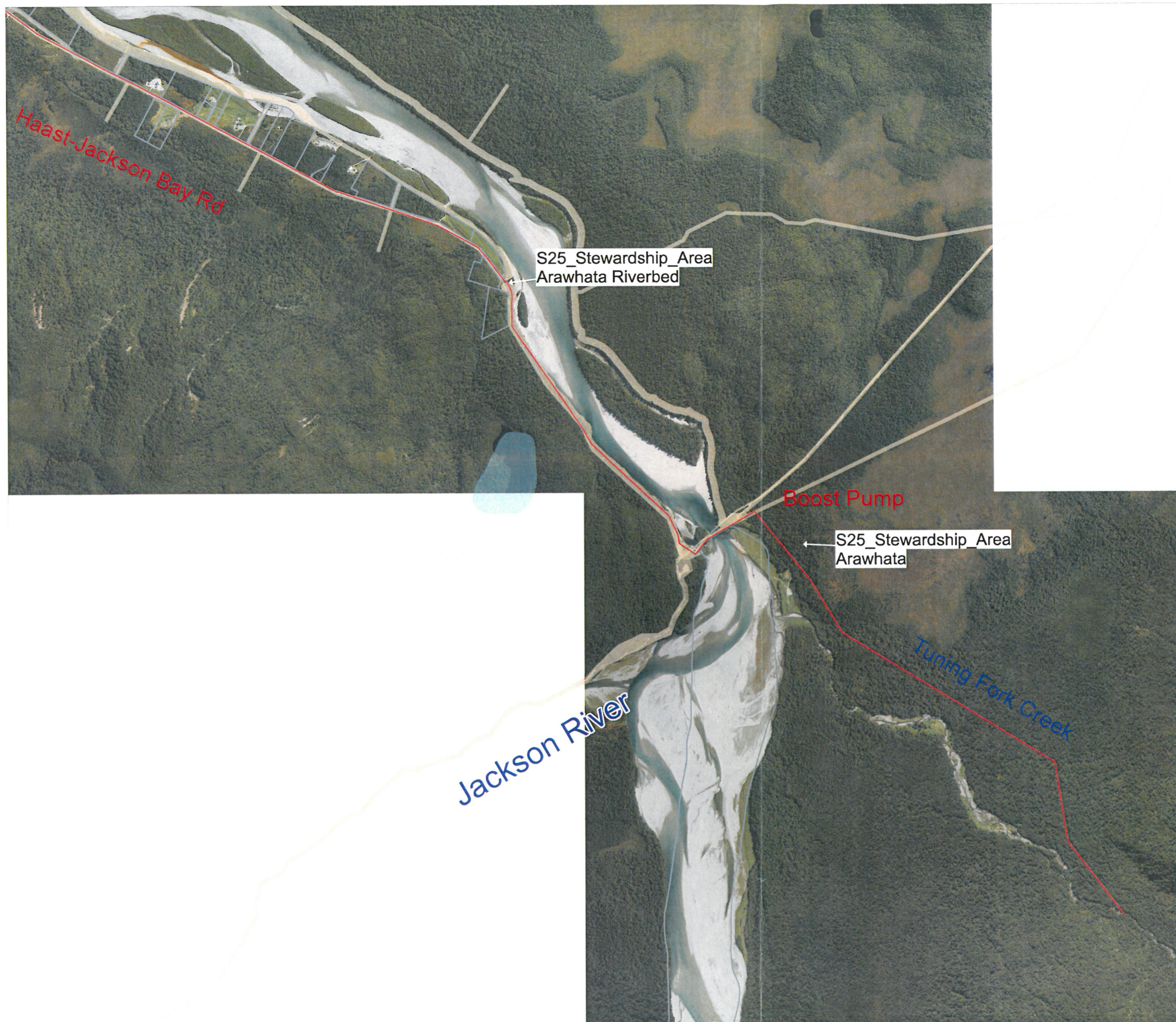
□ Easement

SITE Okuru Enterprises

TITLE Overview - Cadastral

SCALE AT A1	DATE 12/5/16	DRAWN	CHECKED
PROJECT NO.	DRAWING NO.		REVISION

GEOTECH



LEGEND

— Pipeline

Cadastral

□ Property Titles

□ Road Parcels

□ Hydro Parcels

□ Easement

SITE: Okuru Enterprises

TITLE: Tuning Fork Creek - Cadastral

SCALE AT A1:	DATE: 12/5/16	DRAWN:	CHECKED:
PROJECT NO:	DRAWING NO:	REVISION:	

GEOTECH



LEGEND

— Pipeline

Cadastral

□ Property Titles

□ Road Parcels

□ Hydro Parcels

□ Easement

SITE Okuru Enterprises

TITLE Neils Beach - Cadastral

SCALE AT A1:

DATE
12/5/16

DRAWN:

CHECKED:

PROJECT NO.:

DRAWING NO.:

REVISION:

GEOTECH

Okuru Fresh Water Storage Facility Landscape Plan



Fig 1.1 plan view @ 1:5000

filter and pump station building 180 square metres

storage pond 1, reinforced concrete - 80,000 cubic metres capacity, 80 metre radius and 4 metres max height

storage tank 3, reinforced concrete - 30,000 cubic metres capacity, radius of 35 metres and height of 8 metres

storage pond 2, reinforced concrete - 80,000 cubic metres capacity, 80 metre radius and 4 metres max height

storage tank 1, reinforced concrete - 30,000 cubic metres capacity, radius of 35 metres and height of 8 metres

storage tank 2, reinforced concrete - 30,000 cubic metres capacity, radius of 35 metres and height of 8 metres

108 square metre office and control room building and carpark for 10 vehicles

entrance to complex shaped to disappear into surrounding bush so no direct view into site is possible

nearest neighbour at minimum distance of 88 metres away from any Okuru structures

storage tank 4, reinforced concrete - 30,000 cubic metres capacity, radius of 35 metres and height of 8 metres

storage tank 5, reinforced concrete - 30,000 cubic metres capacity, radius of 35 metres and height of 8 metres

storage tank 6, reinforced concrete - 30,000 cubic metres capacity, radius of 35 metres and height of 8 metres

main operational area of 11.7 hectares. Cut to form minimum 2% slope to north and relocate approx 200,000 cubic metres of excavated material into protective windrows on northern and eastern boundaries of operational circle area and as landscaping bunds throughout the site

Fig 1.2 plan view reference NTS



landscape architecture
& environmental planning

steve white (BLA)
1 3aprt eg7h rsqbb, o.m amw 11, u brsonps
ph: 03 789 6066, mob: 021 718 097
email: steve@stimulusdesign.co.nz

copyright stimulus design limited. do not reproduce, replicate, or copy in part or whole without the express permission of the author(s). do not scale. contractor to verify all dimensions onsite prior to commencing any works. any legal boundary, tenure, ownership or physical point implied or shown on this drawing will require authentication through the relevant local and regional authorities.

date drawn	drawn by	scale	dimensions	client	sheet title	revisions
25/09/2016	s white	1:5000	metres (m)	Okuru Water	concept plan	nil