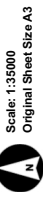


Appendix Three – Relevant maps and aerial imagery

RC160021 - Okuru Enterprises Ltd

Created By: anonymous
Print Date: 23/02/2017
Print Time: 10:51 AM



Scale: 1:35000
Original Sheet Size A3

Projection: NZGD2000, New Zealand Transverse Mercator 2000
Bounds: 12492631, 12492631, 5387483, 5387483, 5120838, 5120838, 5120838, 5120838

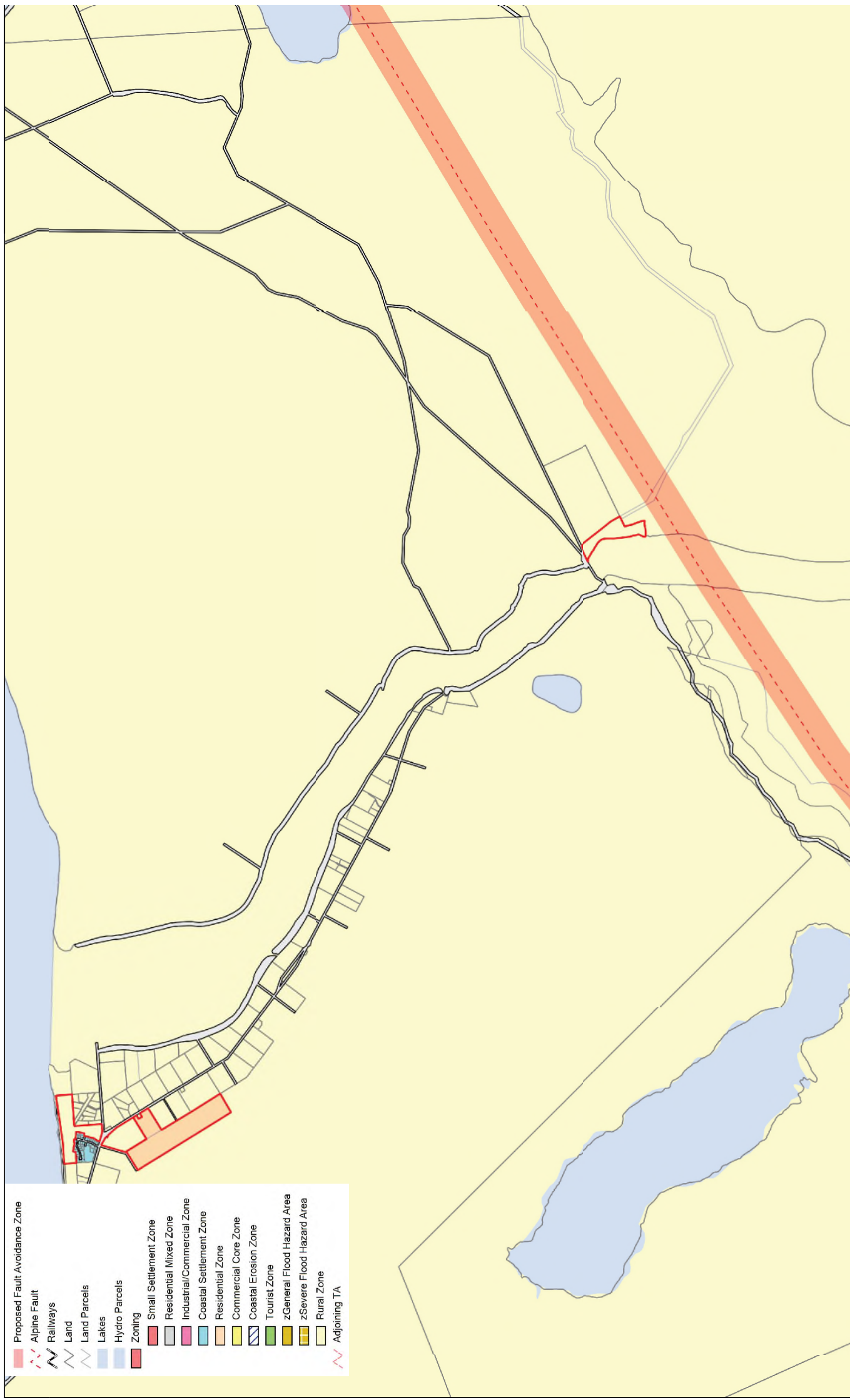
Sourced from LINZ data. Crown Copyright reserved. Not to be reproduced without permission of Westland DC.
The information shown on this plan may not be accurate and is indicative only.
The Westland District Council accepts no responsibility for incomplete or inaccurate information.

RC160021 - Okuru Enterprises Ltd

Created By: anonymous
 Print Date: 23/02/2017
 Print Time: 10:57 AM



	Proposed Fault Avoidance Zone
	Alpine Fault
	Railways
	Land
	Land Parcels
	Lakes
	Hydro Parcels
	Zoning
	Small Settlement Zone
	Residential Mixed Zone
	Industrial/Commercial Zone
	Coastal Settlement Zone
	Residential Zone
	Commercial Core Zone
	Coastal Erosion Zone
	Tourist Zone
	zGeneral Flood Hazard Area
	zSevere Flood Hazard Area
	Rural Zone
	Adjoining TA

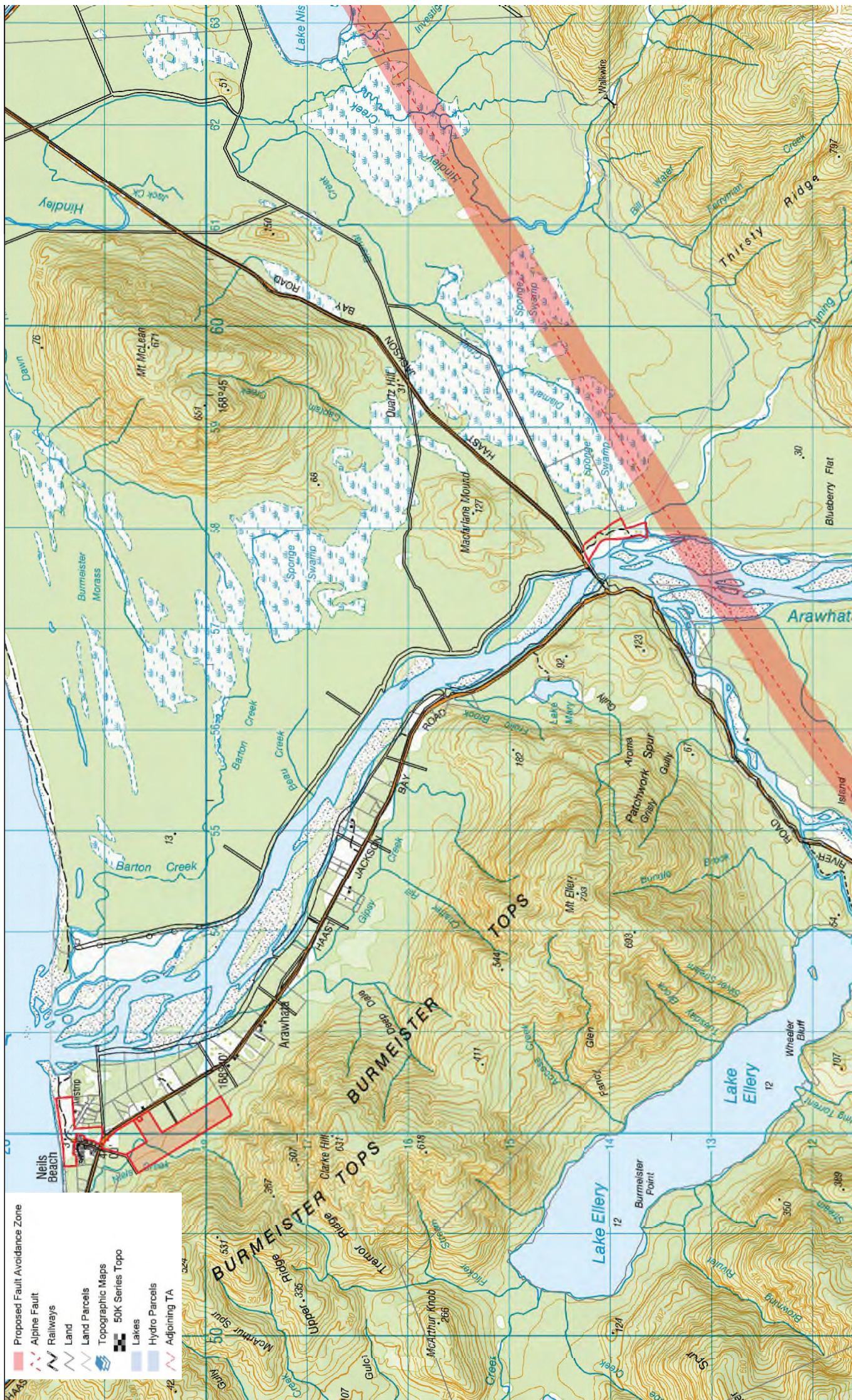


RC1600021 - Okuru Enterprises Ltd

Created By: anonymous
 Print Date: 23/02/2017
 Print Time: 10:59 AM



	Proposed Fault Avoidance Zone
	Alpine Fault
	Railways
	Land
	Land Parcels
	Topographic Maps
	50K Series Topo
	Lakes
	Hydro Parcels
	Adjoining TA

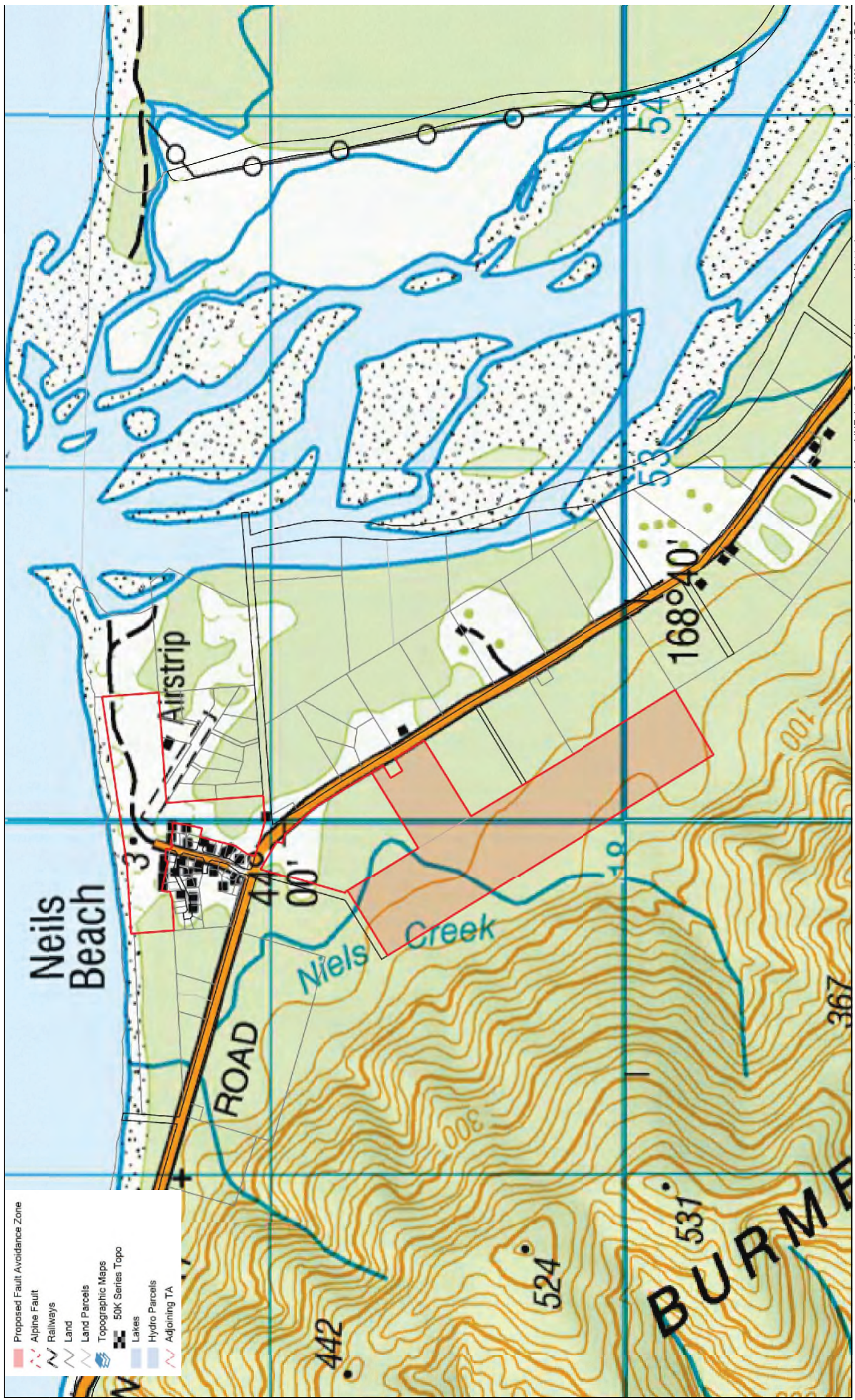


Projection: NZGD2000
 Boards: 1294631, 1294632, 1294633, 1294634, 1294635, 1294636, 1294637, 1294638, 1294639, 1294640, 1294641, 1294642, 1294643, 1294644, 1294645, 1294646, 1294647, 1294648, 1294649, 1294650, 1294651, 1294652, 1294653, 1294654, 1294655, 1294656, 1294657, 1294658, 1294659, 1294660, 1294661, 1294662, 1294663, 1294664, 1294665, 1294666, 1294667, 1294668, 1294669, 1294670, 1294671, 1294672, 1294673, 1294674, 1294675, 1294676, 1294677, 1294678, 1294679, 1294680, 1294681, 1294682, 1294683, 1294684, 1294685, 1294686, 1294687, 1294688, 1294689, 1294690, 1294691, 1294692, 1294693, 1294694, 1294695, 1294696, 1294697, 1294698, 1294699, 1294700, 1294701, 1294702, 1294703, 1294704, 1294705, 1294706, 1294707, 1294708, 1294709, 1294710, 1294711, 1294712, 1294713, 1294714, 1294715, 1294716, 1294717, 1294718, 1294719, 1294720, 1294721, 1294722, 1294723, 1294724, 1294725, 1294726, 1294727, 1294728, 1294729, 1294730, 1294731, 1294732, 1294733, 1294734, 1294735, 1294736, 1294737, 1294738, 1294739, 1294740, 1294741, 1294742, 1294743, 1294744, 1294745, 1294746, 1294747, 1294748, 1294749, 1294750, 1294751, 1294752, 1294753, 1294754, 1294755, 1294756, 1294757, 1294758, 1294759, 1294760, 1294761, 1294762, 1294763, 1294764, 1294765, 1294766, 1294767, 1294768, 1294769, 1294770, 1294771, 1294772, 1294773, 1294774, 1294775, 1294776, 1294777, 1294778, 1294779, 1294780, 1294781, 1294782, 1294783, 1294784, 1294785, 1294786, 1294787, 1294788, 1294789, 1294790, 1294791, 1294792, 1294793, 1294794, 1294795, 1294796, 1294797, 1294798, 1294799, 1294800, 1294801, 1294802, 1294803, 1294804, 1294805, 1294806, 1294807, 1294808, 1294809, 1294810, 1294811, 1294812, 1294813, 1294814, 1294815, 1294816, 1294817, 1294818, 1294819, 1294820, 1294821, 1294822, 1294823, 1294824, 1294825, 1294826, 1294827, 1294828, 1294829, 1294830, 1294831, 1294832, 1294833, 1294834, 1294835, 1294836, 1294837, 1294838, 1294839, 1294840, 1294841, 1294842, 1294843, 1294844, 1294845, 1294846, 1294847, 1294848, 1294849, 1294850, 1294851, 1294852, 1294853, 1294854, 1294855, 1294856, 1294857, 1294858, 1294859, 1294860, 1294861, 1294862, 1294863, 1294864, 1294865, 1294866, 1294867, 1294868, 1294869, 1294870, 1294871, 1294872, 1294873, 1294874, 1294875, 1294876, 1294877, 1294878, 1294879, 1294880, 1294881, 1294882, 1294883, 1294884, 1294885, 1294886, 1294887, 1294888, 1294889, 1294890, 1294891, 1294892, 1294893, 1294894, 1294895, 1294896, 1294897, 1294898, 1294899, 1294900, 1294901, 1294902, 1294903, 1294904, 1294905, 1294906, 1294907, 1294908, 1294909, 1294910, 1294911, 1294912, 1294913, 1294914, 1294915, 1294916, 1294917, 1294918, 1294919, 1294920, 1294921, 1294922, 1294923, 1294924, 1294925, 1294926, 1294927, 1294928, 1294929, 1294930, 1294931, 1294932, 1294933, 1294934, 1294935, 1294936, 1294937, 1294938, 1294939, 1294940, 1294941, 1294942, 1294943, 1294944, 1294945, 1294946, 1294947, 1294948, 1294949, 1294950, 1294951, 1294952, 1294953, 1294954, 1294955, 1294956, 1294957, 1294958, 1294959, 1294960, 1294961, 1294962, 1294963, 1294964, 1294965, 1294966, 1294967, 1294968, 1294969, 1294970, 1294971, 1294972, 1294973, 1294974, 1294975, 1294976, 1294977, 1294978, 1294979, 1294980, 1294981, 1294982, 1294983, 1294984, 1294985, 1294986, 1294987, 1294988, 1294989, 1294990, 1294991, 1294992, 1294993, 1294994, 1294995, 1294996, 1294997, 1294998, 1294999, 1295000

Sourced from LINZ data. Crown Copyright reserved. Not to be reproduced without permission of Westland DC.
 The information shown on this plan may not be accurate and is indicative only.
 The Westland District Council accepts no responsibility for incomplete or inaccurate information.

Scale: 1:35000
 Original Sheet Size A3

- Proposed Fault Avoidance Zone
- Alpine Fault
- Railways
- Land
- Land Parcels
- Topographic Maps
- 50K Series Topo
- Lakes
- Hydro Parcels
- Adjoining TA



Projection: NZGD2000, New Zealand Transverse Mercator 2000
 Bounds: 1256523.129655, 51121.592, 1256878.767877, 51122.592, 36024165

Scale: 1:10000
 Original Sheet Size A3

Sourced from LINZ data. Crown Copyright reserved. Not to be reproduced without permission of Westland DC.
 The information shown on this plan may not be accurate and is indicative only.
 The Westland District Council accepts no responsibility for incomplete or inaccurate information.

	Proposed Fault Avoidance Zone
	Alpine Fault
	Railways
	Land
	Land Parcels
	Topographic Maps
	50K Series Topo
	Lakes
	Hydro Parcels
	Adjoining TA

