



HOKITIKA'S
REGENTtheatre

PRESENTATION TO WESTLAND
DISTRICT COUNCIL
25TH MAY 2023

PREPARED BY THE MANAGEMENT
COMMITTEE OF
WESTLAND COMMUNITY CENTRE
INCORPORATED



HISTORY



A BRIEF TIMELINE

- 1936 - Theatre opened
- 1979 - Theatre sold to community
- 2006 - Theatre put up for sale
- 2007 - Theatre future secured, WCCI revitalised and Theatre refurbishment commences
- 2010 - Structural upgrades complete
- 2010 - Digital projection begins with Avatar 3D
- 2022 - Better Off Funding confirmed



OUR PRINCIPLES

- Maximise the Regent's benefits to the community
- Improve patronage
- Financially viable
- Follow the Heritage Conservation Plan
- Keep maintenance and replacement up-to-date
- Be versatile and flexible
- Focus on core uses, complement rather compete with other community facilities and businesses
- Accessible for disabled and hearing or vision impaired
- Alcohol only for special occasions
- Keep operating, as far as possible, during refurbishments
- Describe our activities in our Business Plan



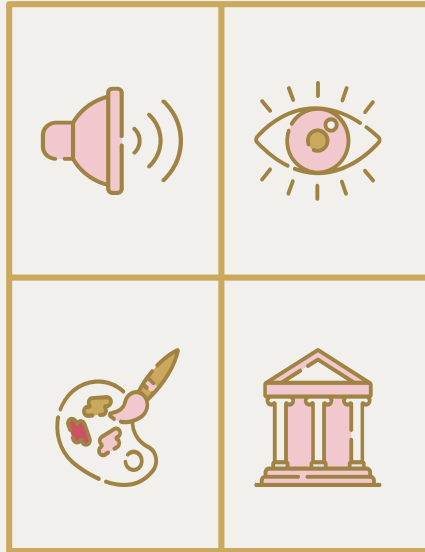
ENHANCING WELLBEING

ECONOMIC

25,000 users per year in a town of 3,500 people

CULTURAL

The major entertainment venue in town with new release films, and live performances by local and visiting shows.



SOCIAL

Acting as the Town Hall in Hokitika and regularly used for community occasions.

ENVIRONMENTAL

A historical landmark building that has been lovingly restored by the Westland Community.



REPAIRS AND MAINTENANCE

Essential to preserve and enhance the historic features of Hokitika's Regent Theatre.

REFURBISHMENT

Preserving historical value while sympathetically enhancing facilities.

EQUIPMENT AND SYSTEMS

Reviewed regularly to ensure high-quality experiences and operational efficiencies.

VIABLE OPERATION

Adapting to changing times, attracting diverse audiences, and valuing volunteers.



R

BREAKEVEN OPERATIONAL BUDGET

Total Income:

\$326,934.00

Total Expenses:

\$326,708.00

Net Surplus: \$226.00



\$57,500

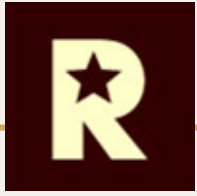
Year 1 Long Term Plan

6%

Average CPI

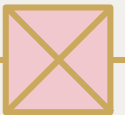
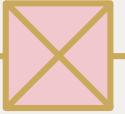
\$60,950

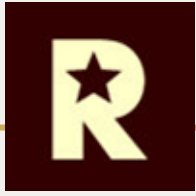
Year 2 Long Term Plan



\$18

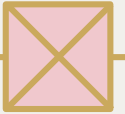
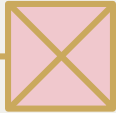
The cost per Hokitika Ratepayer to fund Council's contribution to the
Theatre





Our volunteers average over 7,000 hours per year working on the building, equipment and helping with events.

This is a direct saving of over \$150,000 per year, assuming each volunteer was paid minimum wage.





PLANS FOR THIS YEAR

Better Off Funding and Other Grant Projects:

- Exterior and interior maintenance
- Major sound system upgrade and also new hearing and vision impaired assistance
- Electrical upgrades
- Cultural and historical lighting upgrades
- New performance lighting bay
- CCTV system
- Sign panels with Theatre story - inside and out
- Directional signage
- Documenting systems and preserving archives



HOW CAN COUNCIL HELP?

Can we please request:

- A Councillor/s be nominated as Council Liaison
 - Mayor, Councillors and Staff undertake a conducted tour
 - Clarification of inflation adjustments
-

R

WITH THANKS

