

WDC Transportation Update

November 2023

WESTLAND
District Council | Te Kahui o Poutini



Update Topics Covered



1. NLTP Funding Bid 2024/27
2. What does a road cost to Maintain?
3. Asset Retreat & Levels of Service Changes
4. 2023/24 Reseal List
5. 2023/24 Footpath List
6. Special Purpose Road – Where to from here?
7. Update on Parking Strategy
8. Update on Speed Management

2024/27 NLTP Bid

- Initial 2024-2027 Bid Request = \$37,889,738 (Option 3 – Preserving our Assets)
- Revised Bid Request (to date) = \$34,161,009 (Option 2.5 – Reduced sealing programme, Removes Emergency funding reserve, Better Off Projects & Seal Extensions also removed).

2024/27 NLTP Bid

	2024-27 NLTP		
Option 1 (Status Quo)			
WDC Share	\$1.90m	\$2.08m	\$2.19m
Option 2 (do minimum)			
WDC Share	\$2.39m	\$2.50m	\$2.55m
\$\$ change v baseline	\$0.50m	\$0.42m	\$0.36m
% rates increase v baseline	2%	2%	2%
Option 2.5 (balanced)			
WDC Share	\$3.25m	\$3.69m	\$3.26m
\$\$ change v baseline	\$1.35m	\$1.61m	\$1.07m
% rates increase v baseline	7%	8%	5%
Option 3 (unconstrained)			
WDC Share	\$3.65m	\$3.98m	\$3.98m
\$\$ change v baseline	\$1.76m	\$1.90m	\$1.79m
% rates increase v baseline	9%	10%	9%

What does a road cost to maintain?

- Sealed Pavements average \$24.14/m
- Unsealed Pavements average \$4.14/m
- Overall average cost approx.' \$15.25/m
- Emergency works average \$122/m

What does a road cost to maintain?

- Gillespies Beach Road

- General Mtce = \$4.43/m
- Emergency Works = \$6.31/m



- Milltown Road

- General Mtce = \$3.22/m
- Emergency Works = \$4.91/m



- Jackson River Road

- General Mtce = \$2.30/m
- Emergency Works = \$1.84/m



What does a road cost to maintain?

- Oneone Road

- General Mtce = \$5.20/m
- Emergency Works = \$6.89/m

- Totara Valley Road

- General Mtce = \$0.81/m
- Emergency Works = \$3.90/m

- Cement Lead Road

- General Mtce = \$9.83/m
- Emergency Works = \$0.55/m



What does a road cost to maintain?

- Adairs Road

- General Mtce = \$4.77/m
- Emergency Works = \$1.36/m



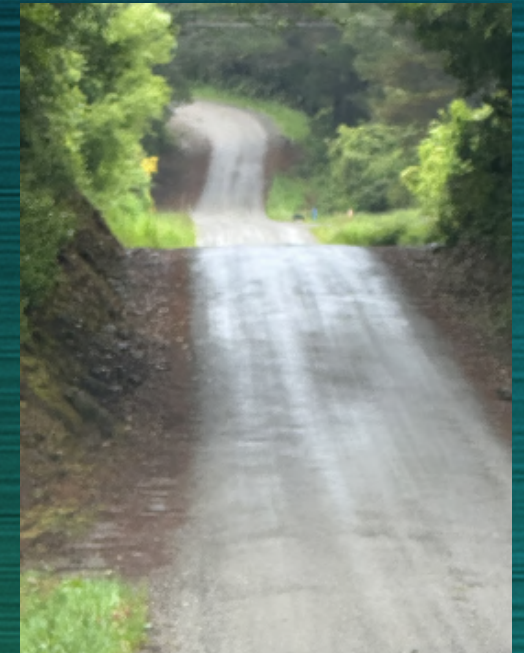
- Gillams Gully Road

- General Mtce = \$6.03/m



- Hau Hau Road

- General Mtce = \$7.58/m
- Emergency Works = \$6.66/m



Asset Retreat & LoS Change

- Asset Retreat vs Managed Retreat
 - Asset retreat - The act of ceasing maintenance activities on a road or structure and in the case of bridges likely removing the structure entirely. An activity carried out largely for economic sustainability reasons.
 - Managed Retreat – Actively buying land/property with a mind towards “retiring” the land and no longer allowing development or occupation. An activity more closely linked to challenges resulting from climate change.
- LoS Change
 - Continuing to maintain assets although at a reduced level of service. Eg, less frequent Grading, mowing, pothole repairs or restricting loads/traffic over bridges and other structures. As for Asset Retreat also carried out for economic sustainability reasons

Asset Retreat & LoS Changes – Roads/Structures for Consideration

1. Cron Road (Harihari) & Johnny Walker Bridge – LoS Change?
2. Oneone Road (Unsealed Section) – LoS Change?
3. Poerua River Road (Unsealed Section) – Retreat or LoS Change?
4. Doughboy Road South - Retreat?
5. LaFontaine Bridge on River Road. (Guy Menzies Memorial Access) – Retreat or LoS Change?
6. Waitangitaona Road (last 2-3km before Stock yards) – Retreat or LoS Change? Or Business/Landowner/Council Partnership?
7. Totara Valley Road (unsealed Section) – Already at low LoS but significant Bridge Infrastructure.
8. Jackson River Road – LoS or Retreat?

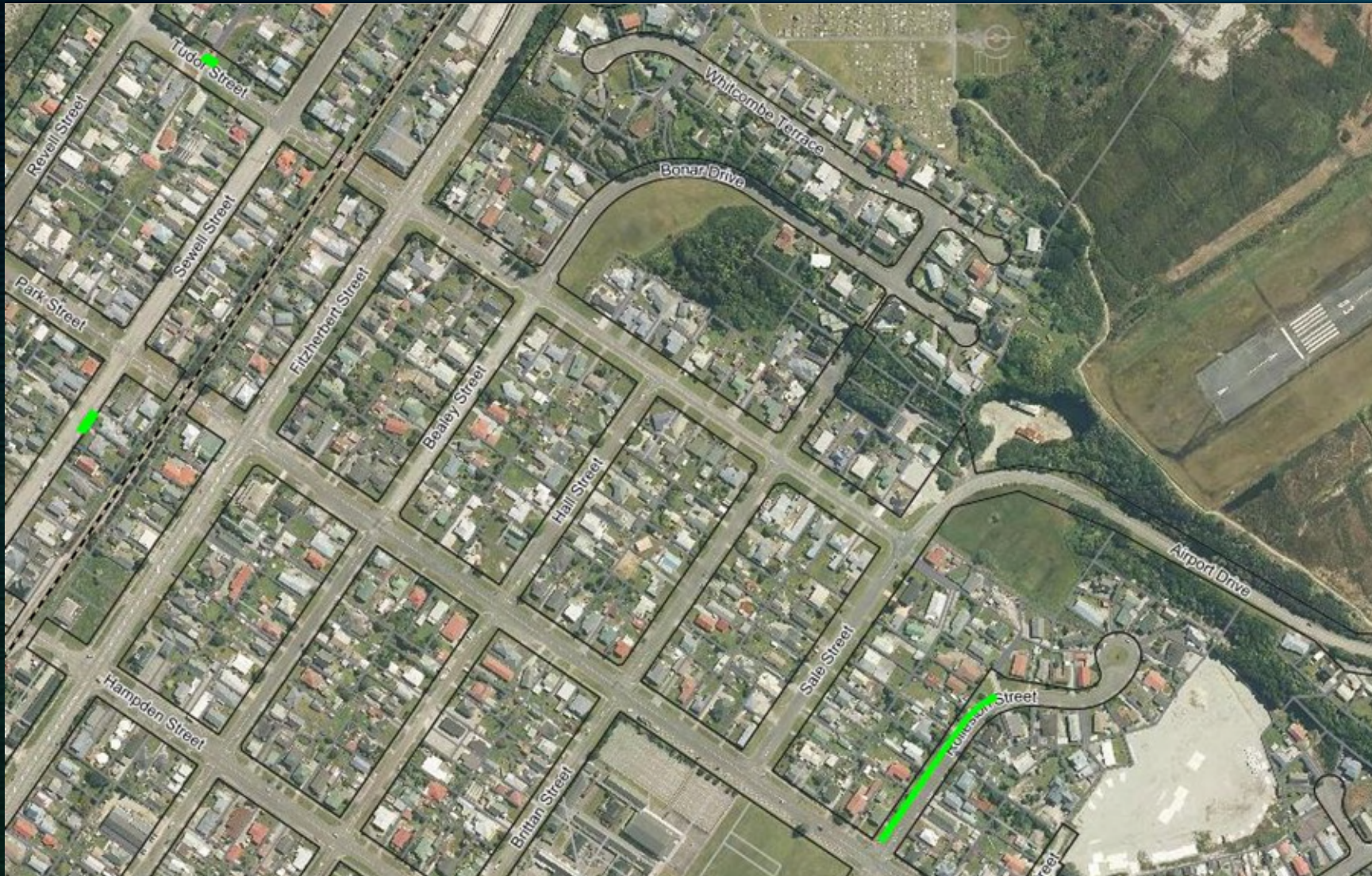
2023-2024 Reseal List

WDC Reseal Programme 23/24				
Road Name	Start	End	Length_m	Width
Alpine View	0	469	469	9
Arahura Pa #1 (Old School Rd)	38	576	538	3.6
Bealey St	0	147	147	14.6
Brittan St	0	565	565	6.9
Hall St (South)	11	128	117	10.6
Hall St (North)	244	456	212	5.4
Livingstone St	294	510	216	14.6
MacArthur Rd	3265	4224	959	5
One Mile Line Rd	1712	2390	675	5
Ross Beach Rd	0	1595	1640	5.6
Third St	115	469	354	5.5
Whale Rd	0	790	790	5
Wharf St	0	92	92	6.5
Haast Jackson Bay Rd - 1st Rehab Section	26773	28382	1609	6
Haast Jackson Bay Rd - 2nd Rehab Section	33300	33990	690	6
Total			9073	

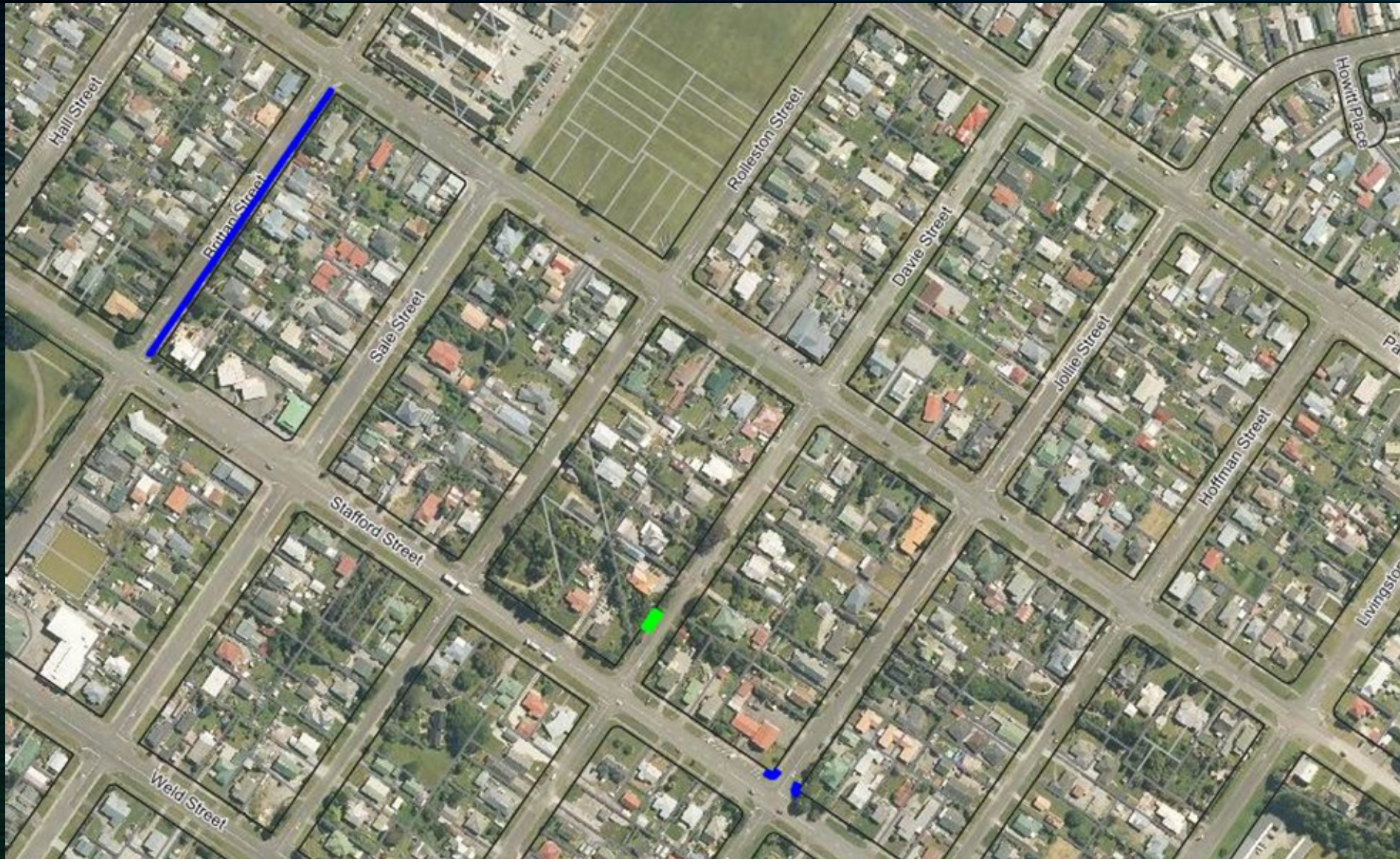
Footpath Works Programme



Footpath Works Programme



Footpath Works Programme



Footpath Works Programme



Footpath Works Programme



SPR – A Temporary Reprieve but “Where to from here?”

Our Intentions for 2024-2027 NLTP

- Repaint Arawhata Bridge (estimated cost \$1.2m-\$1.5m)
- Carry out more pavement rehab works
- Continue resilience works
- Carry out more bridge mtce works (where possible)
- Invite Waka Kotahi into more open dialog on the potential future for this road.

Update on Parking – Following Workshop



Regional Speed Management Plan Update

- This is still something we are required to have.
- Plans originally discussed have been amended to cover Schools and essential speed changes only, ie, Takutai Terrace, Franz Alpine, Kaniere Road, Greenstone Road, Pine Tree Road, Arahura Pa.
- Time extension being applied for which puts timing out to March 2024 onward for this process to be undertaken. This allows for further modifications dependent on direction of new government.
- We have already purchased electronic signs for several school zones and will continue to prepare for these changes.

Questions?